

PLA2G3 Polyclonal Antibody

Catalog No: #30130



Package Size: #30130-1 50ul #30130-2 100ul

Orders: order@signalwayantibody.com
Support: tech@signalwayantibody.com

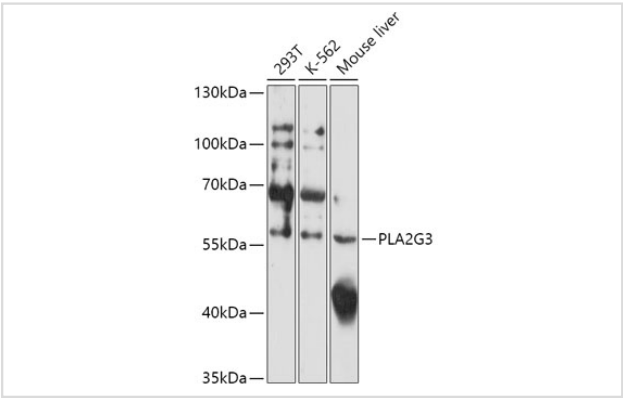
Description

Product Name	PLA2G3 Polyclonal Antibody
Host Species	Rabbit
Clonality	Polyclonal
Isotype	IgG
Purification	Affinity purification
Applications	WB
Species Reactivity	Human,Mouse
Immunogen Description	A synthetic peptide of Human PLA2G3.
Other Names	GIII-SPLA2, SPLA2III, sPLA2-III
Accession No.	Swiss-Prot#:Q9NZ20NCBI Gene ID:50487
Uniprot	Q9NZ20
GeneID	50487;
Calculated MW	57kDa
Formulation	Avoid freeze / thaw cycles. Buffer: PBS with 50% glycerol, pH7.4.
Storage	Store at -20°C

Application Details

WB 1:500 - 1:2000

Images



Western blot analysis of extracts of various cell lines, using PLA2G3 at 1:1000 dilution.

Background

This gene encodes a protein that belongs to the secreted phospholipase A2 family, whose members include the bee venom enzyme. The encoded enzyme functions in lipid metabolism and catalyzes the calcium-dependent hydrolysis of the sn-2 acyl bond of phospholipids to release arachidonic acid and lysophospholipids. This enzyme acts as a negative regulator of ciliogenesis, and may play a role in cancer development by stimulating tumor cell growth and angiogenesis. This gene is associated with oxidative stress, and polymorphisms in this gene are linked to risk for Alzheimer’s

disease. [provided by RefSeq, Apr 2014]

Note: This product is for in vitro research use only