

# WAC Polyclonal Antibody

Catalog No: #30135



Package Size: #30135-1 50ul #30135-2 100ul

Orders: [order@signalwayantibody.com](mailto:order@signalwayantibody.com)  
Support: [tech@signalwayantibody.com](mailto:tech@signalwayantibody.com)

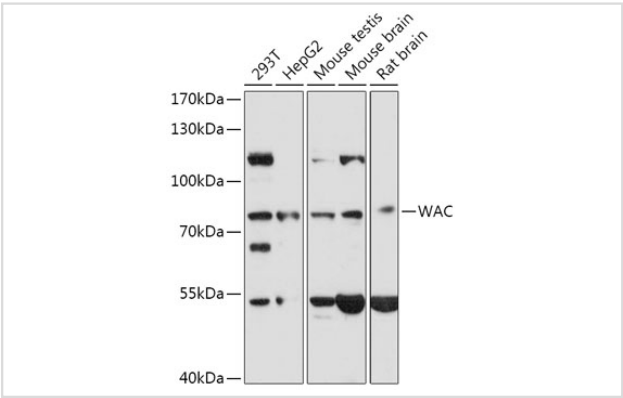
## Description

|                       |                                                                   |
|-----------------------|-------------------------------------------------------------------|
| Product Name          | WAC Polyclonal Antibody                                           |
| Host Species          | Rabbit                                                            |
| Clonality             | Polyclonal                                                        |
| Isotype               | IgG                                                               |
| Purification          | Affinity purification                                             |
| Applications          | WB                                                                |
| Species Reactivity    | Human,Mouse,Rat                                                   |
| Immunogen Description | Recombinant fusion protein of human WAC (NP_057712.2).            |
| Other Names           | BM-016, DESSH, PRO1741, Wwp4                                      |
| Accession No.         | Swiss-Prot#:Q9BTA9NCBI Gene ID:51322                              |
| Uniprot               | Q9BTA9                                                            |
| GeneID                | 51322;                                                            |
| Calculated MW         | 71kDa                                                             |
| Formulation           | Avoid freeze / thaw cycles. Buffer: PBS with 50% glycerol, pH7.4. |
| Storage               | Store at -20°C                                                    |

## Application Details

WB 1:500 - 1:2000

## Images



Western blot analysis of extracts of various cell lines, using WAC at 1:1000 dilution.

## Background

The protein encoded by this gene contains a WW domain, which is a protein module found in a wide range of signaling proteins. This domain mediates protein-protein interactions and binds proteins containing short linear peptide motifs that are proline-rich or contain at least one proline. This gene product shares 94% sequence identity with the WAC protein in mouse, however, its exact function is not known. Alternative splicing results in multiple transcript variants. [provided by RefSeq, Dec 2008]

---

Note: This product is for in vitro research use only