

DCDC2 Polyclonal Antibody

Catalog No: #30136



Package Size: #30136-1 50ul #30136-2 100ul

Orders: order@signalwayantibody.com
Support: tech@signalwayantibody.com

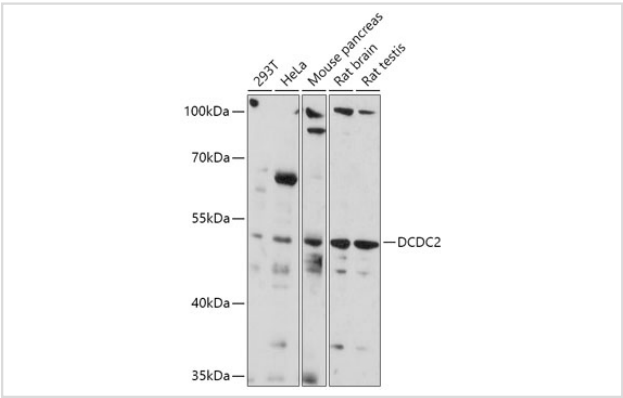
Description

Product Name	DCDC2 Polyclonal Antibody
Host Species	Rabbit
Clonality	Polyclonal
Isotype	IgG
Purification	Affinity purification
Applications	WB
Species Reactivity	Human,Mouse,Rat
Immunogen Description	Recombinant fusion protein of human DCDC2 (NP_001182539).
Other Names	DCDC2A, DFNB66, NPHP19, RU2, RU2S
Accession No.	Swiss-Prot#:Q9UHG0NCBI Gene ID:51473
Uniprot	Q9UHG0
GeneID	51473;
Calculated MW	53kDa
Formulation	Avoid freeze / thaw cycles. Buffer: PBS with 50% glycerol, pH7.4.
Storage	Store at -20°C

Application Details

WB 1:500 - 1:2000

Images



Western blot analysis of extracts of various cell lines, using DCDC2 at 1:1000 dilution.

Background

This gene encodes a doublecortin domain-containing family member. The doublecortin domain has been demonstrated to bind tubulin and enhance microtubule polymerization. This family member is thought to function in neuronal migration where it may affect the signaling of primary cilia. Mutations in this gene have been associated with reading disability (RD) type 2, also referred to as developmental dyslexia. Alternatively spliced transcript variants encoding the same protein have been found for this gene. [provided by RefSeq, Jan 2013]

Note: This product is for in vitro research use only