

PPHLN1 Polyclonal Antibody

Catalog No: #30137



Package Size: #30137-1 50ul #30137-2 100ul

Orders: order@signalwayantibody.com
Support: tech@signalwayantibody.com

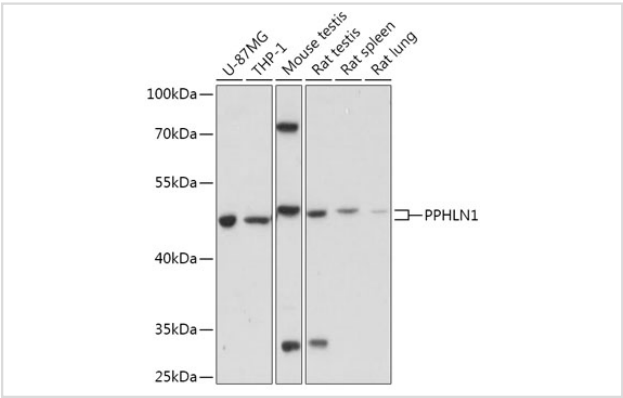
Description

Product Name	PPHLN1 Polyclonal Antibody
Host Species	Rabbit
Clonality	Polyclonal
Isotype	IgG
Purification	Affinity purification
Applications	WB
Species Reactivity	Human,Mouse,Rat
Immunogen Description	Recombinant fusion protein of human PPHLN1 (NP_958846.1).
Other Names	CR, HSPC206, HSPC232
Accession No.	Swiss-Prot#:Q8NEY8NCBI Gene ID:51535
Uniprot	Q8NEY8
GeneID	51535;
Calculated MW	53kDa
Formulation	Avoid freeze / thaw cycles. Buffer: PBS with 50% glycerol, pH7.4.
Storage	Store at -20°C

Application Details

WB 1:500 - 1:2000

Images



Western blot analysis of extracts of various cell lines, using PPHLN1 at 1:1000 dilution.

Background

The protein encoded by this gene is one of the several proteins that become sequentially incorporated into the cornified cell envelope during the terminal differentiation of keratinocyte at the outer layers of epidermis. This protein interacts with periplakin, which is known as a precursor of the cornified cell envelope. The cellular localization pattern and insolubility of this protein suggest that it may play a role in epithelial differentiation and contribute to epidermal integrity and barrier formation. Multiple alternatively spliced transcript variants encoding distinct isoforms have been observed.

Note: This product is for in vitro research use only