

ARHGEF10L Polyclonal Antibody

Catalog No: #30143

Package Size: #30143-1 50ul #30143-2 100ul

Orders: order@signalwayantibody.comSupport: tech@signalwayantibody.com

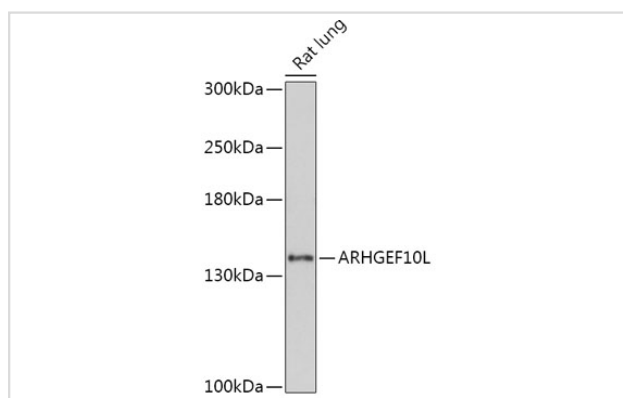
Description

Product Name	ARHGEF10L Polyclonal Antibody
Host Species	Rabbit
Clonality	Polyclonal
Isotype	IgG
Purification	Affinity purification
Applications	WB
Species Reactivity	Human,Rat
Immunogen Description	Recombinant fusion protein of human ARHGEF10L (NP_001011722).
Other Names	GrinchGEF
Accession No.	Swiss-Prot#:Q9HCE6NCBI Gene ID:55160
Uniprot	Q9HCE6
GeneID	55160;
Calculated MW	140kDa
Formulation	Avoid freeze / thaw cycles. Buffer: PBS with 50% glycerol, pH7.4.
Storage	Store at -20°C

Application Details

WB 1:500 - 1:2000

Images



Western blot analysis of extracts of Rat lung, using ARHGEF10L at 1:1000 dilution.

Background

This gene belongs to the RhoGEF subfamily of RhoGTPases. Members of this subfamily are activated by specific guanine nucleotide exchange factors (GEFs) and are involved in signal transduction. The encoded protein shows cytosolic distribution. Alternative splicing results in multiple transcript variants. [provided by RefSeq, Jun 2016]

Note: This product is for in vitro research use only