

# MTMR8 Polyclonal Antibody

Catalog No: #30147



Package Size: #30147-1 50ul #30147-2 100ul

Orders: [order@signalwayantibody.com](mailto:order@signalwayantibody.com)  
Support: [tech@signalwayantibody.com](mailto:tech@signalwayantibody.com)

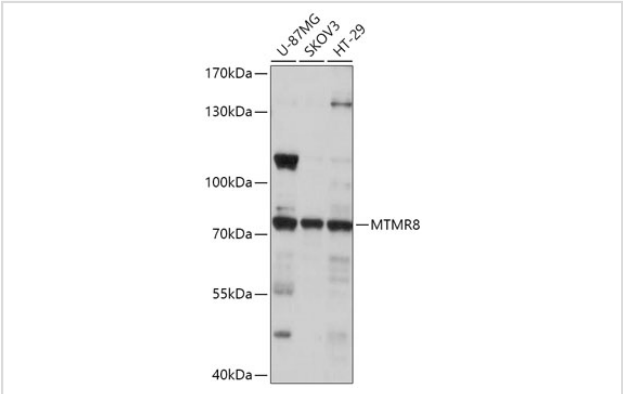
## Description

Product Name	MTMR8 Polyclonal Antibody
Host Species	Rabbit
Clonality	Polyclonal
Isotype	IgG
Purification	Affinity purification
Applications	WB,IHC
Species Reactivity	Human,Mouse,Rat
Immunogen Description	Recombinant fusion protein of human MTMR8 (NP_060147.2).
Other Names	MTMR8
Accession No.	Uniprot:Q96EF0GeneID:55613
Uniprot	Q96EF0
GeneID	55613
Calculated MW	79kDa
SDS-PAGE MW	79kDa
Formulation	PBS with 0.02% sodium azide,50% glycerol,pH7.3.
Storage	Store at -20°C. Avoid freeze / thaw cycles.

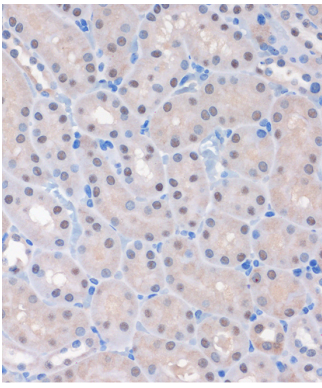
## Application Details

WB 1:500 - 1:2000IHC 1:50 - 1:200

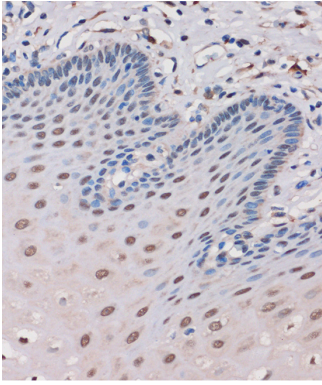
## Images



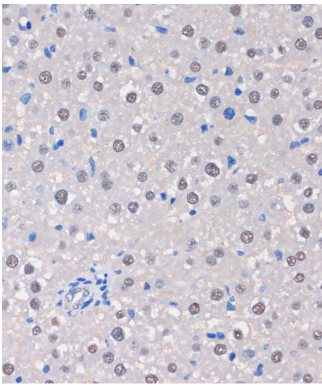
Western blot analysis of extracts of various cell lines, using MTMR8 antibody.



Immunohistochemistry of paraffin-embedded Mouse kidney using MTMR8 Rabbit pAb.



Immunohistochemistry of paraffin-embedded Human esophageal using MTMR8 Rabbit pAb.



Immunohistochemistry of paraffin-embedded Rat liver using MTMR8 Rabbit pAb.

## Background

This gene encodes a member of the myotubularin-related family and is part of the MTMR6 subgroup. Family members are dual-specificity phosphatases and the encoded protein contains a phosphoinositide-binding domain (PID) and a SET-interacting domain (SID). Defects in other family members have been found in myotubular myopathic diseases. [provided by RefSeq, Mar 2010]

Note: This product is for in vitro research use only