

DDX28 Polyclonal Antibody

Catalog No: #30150

Package Size: #30150-1 50ul #30150-2 100ul

Orders: order@signalwayantibody.comSupport: tech@signalwayantibody.com

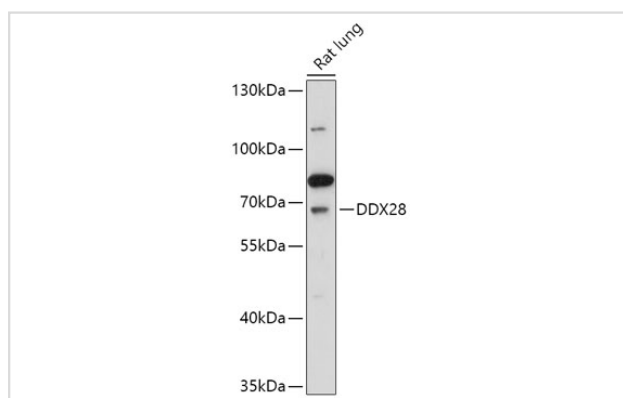
Description

Product Name	DDX28 Polyclonal Antibody
Host Species	Rabbit
Clonality	Polyclonal
Isotype	IgG
Purification	Affinity purification
Applications	WB
Species Reactivity	Human,Mouse,Rat
Immunogen Description	Recombinant fusion protein of human DDX28 (NP_060850.2).
Other Names	MDDX28
Accession No.	Swiss-Prot#:Q9NUL7NCBI Gene ID:55794
Uniprot	Q9NUL7
GeneID	55794;
Calculated MW	60kDa
Formulation	Avoid freeze / thaw cycles. Buffer: PBS with 50% glycerol, pH7.4.
Storage	Store at -20°C

Application Details

WB 1:500 - 1:2000

Images



Western blot analysis of extracts of Rat lung, using DDX28 at 1:1000 dilution.

Background

DEAD box proteins, characterized by the conserved motif Asp-Glu-Ala-Asp (DEAD), are putative RNA helicases. They are implicated in a number of cellular processes involving alteration of RNA secondary structure, such as translation initiation, nuclear and mitochondrial splicing, and ribosome and spliceosome assembly. Based on their distribution patterns, some members of the DEAD box protein family are believed to be involved in embryogenesis, spermatogenesis, and cellular growth and division. This gene is intronless. It encodes an RNA-dependent ATPase. The encoded

protein is localized in the mitochondria and the nucleus, and can be transported between the mitochondria and the nucleus. [provided by RefSeq, Jul 2008]

Note: This product is for in vitro research use only