

# RANBP10 Polyclonal Antibody

Catalog No: #30156



Package Size: #30156-1 50ul #30156-2 100ul

Orders: [order@signalwayantibody.com](mailto:order@signalwayantibody.com)  
Support: [tech@signalwayantibody.com](mailto:tech@signalwayantibody.com)

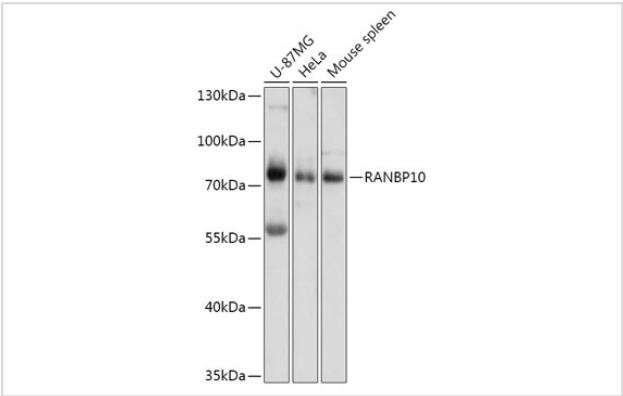
## Description

Product Name	RANBP10 Polyclonal Antibody
Host Species	Rabbit
Clonality	Polyclonal
Isotype	IgG
Purification	Affinity purification
Applications	WB
Species Reactivity	Human,Mouse
Immunogen Description	Recombinant fusion protein of human RANBP10 (NP_065901.1).
Accession No.	Swiss-Prot#:Q6VN20NCBI Gene ID:57610
Uniprot	Q6VN20
GeneID	57610;
Calculated MW	73kDa
Formulation	Avoid freeze / thaw cycles. Buffer: PBS with 50% glycerol, pH7.4.
Storage	Store at -20°C

## Application Details

WB 1:500 - 1:2000

## Images



Western blot analysis of extracts of various cell lines, using RANBP10 at 1:1000 dilution.

## Background

RAN is a small GTPase involved in the assembly of microtubules to form mitotic spindles. The protein encoded by this gene is a cytoplasmic guanine nucleotide exchange factor (GEF) that binds beta-tubulin and has GEF activity toward RAN. The encoded protein plays a role in the formation of noncentrosomal microtubules. In addition, this protein may be involved in the regulation of D(1) receptor signaling by protein kinase C delta and protein kinase C gamma. Several transcript variants encoding different isoforms have been found for this gene. [provided by RefSeq, Feb 2016]

---

Note: This product is for in vitro research use only