

## STIM2 Polyclonal Antibody

Catalog No: #30157

Package Size: #30157-1 50ul #30157-2 100ul

Orders: [order@signalwayantibody.com](mailto:order@signalwayantibody.com)Support: [tech@signalwayantibody.com](mailto:tech@signalwayantibody.com)

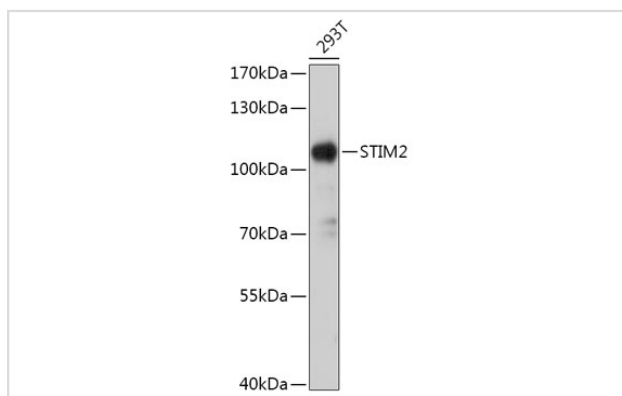
## Description

Product Name	STIM2 Polyclonal Antibody
Host Species	Rabbit
Clonality	Polyclonal
Isotype	IgG
Purification	Affinity purification
Applications	WB,IHC,IF
Species Reactivity	Human,Mouse,Rat
Immunogen Description	Recombinant fusion protein of human STIM2 (NP_001162588).
Other Names	STIM2
Accession No.	Uniprot:Q9P246GeneID:57620
Uniprot	Q9P246
GeneID	57620
Calculated MW	110kDa
SDS-PAGE MW	110kDa
Formulation	PBS with 0.02% sodium azide,50% glycerol,pH7.3.
Storage	Store at -20°C. Avoid freeze / thaw cycles.

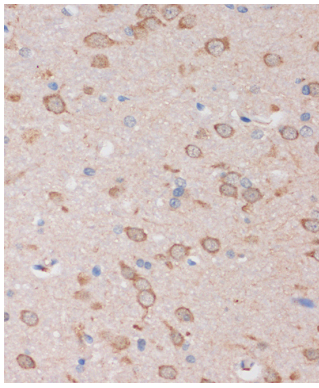
## Application Details

WB □ 1:500 - 1:2000 IHC □ 1:50 - 1:200 IF □ 1:50 - 1:200

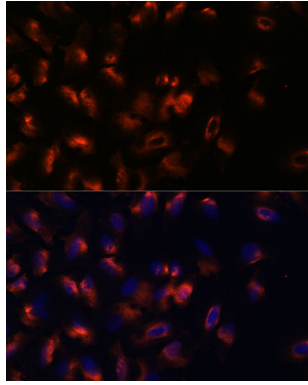
## Images



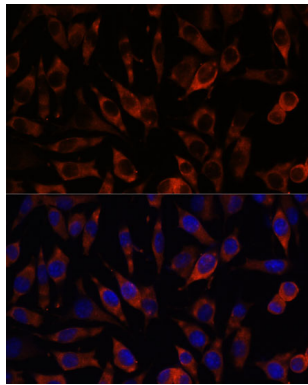
Western blot analysis of extracts of 293T cells, using STIM2 antibody.



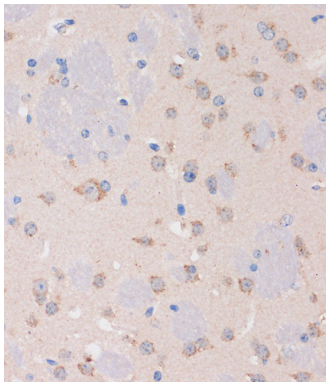
Immunohistochemistry of paraffin-embedded Rat brain using STIM2 Rabbit pAb.



Immunofluorescence analysis of U-2 OS cells using STIM2 antibody.



Immunofluorescence analysis of L929 cells using STIM2 antibody.



Immunohistochemistry of paraffin-embedded Mouse brain using STIM2 Rabbit pAb.

## Background

This gene is a member of the stromal interaction molecule (STIM) family and likely arose, along with related family member STIM1, from a common ancestral gene. The encoded protein functions to regulate calcium concentrations in the cytosol and endoplasmic reticulum, and is involved in the activation of plasma membrane Orai Ca(2+) entry channels. This gene initiates translation from a non-AUG (UUG) start site. A signal peptide is cleaved from the resulting protein. Multiple transcript variants result from alternative splicing. [provided by RefSeq, Dec 2009]

---

Note: This product is for in vitro research use only