

# SMAP1 Polyclonal Antibody

Catalog No: #30161



Package Size: #30161-1 50ul #30161-2 100ul

Orders: [order@signalwayantibody.com](mailto:order@signalwayantibody.com)  
Support: [tech@signalwayantibody.com](mailto:tech@signalwayantibody.com)

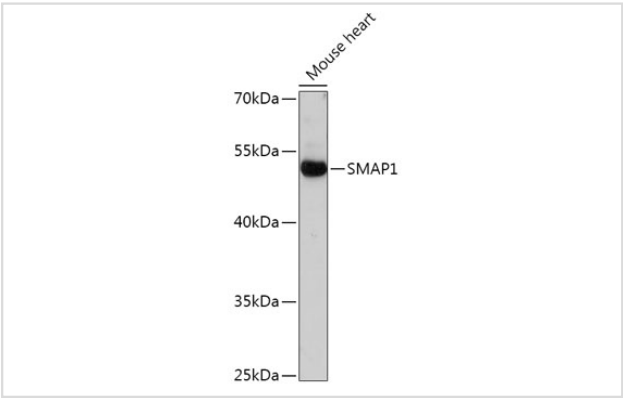
## Description

Product Name	SMAP1 Polyclonal Antibody
Host Species	Rabbit
Clonality	Polyclonal
Isotype	IgG
Purification	Affinity purification
Applications	WB,IF
Species Reactivity	Human,Mouse,Rat
Immunogen Description	Recombinant fusion protein of human SMAP1 (NP_001037770).
Other Names	SMAP-1
Accession No.	Swiss-Prot#:Q8IYB5NCBI Gene ID:60682
Uniprot	Q8IYB5
GeneID	60682;
Calculated MW	50kDa
Formulation	Avoid freeze / thaw cycles. Buffer: PBS with 50% glycerol, pH7.4.
Storage	Store at -20°C

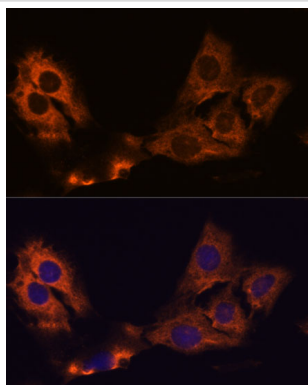
## Application Details

WB 1:500 - 1:2000IF 1:50 - 1:200

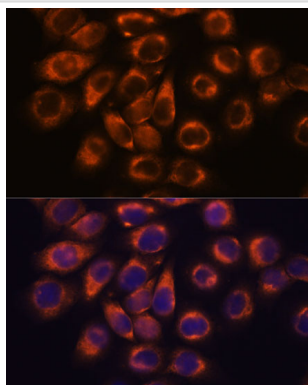
## Images



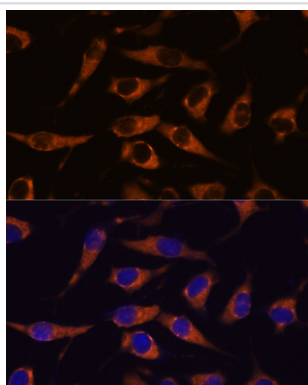
Western blot analysis of extracts of Mouse heart, using SMAP1 at 1:1000 dilution.



Immunofluorescence analysis of C6 cells using SMAP1 at dilution of 1:100. Blue: DAPI for nuclear staining.



Immunofluorescence analysis of HeLa cells using SMAP1 at dilution of 1:100. Blue: DAPI for nuclear staining.



Immunofluorescence analysis of L929 cells using SMAP1 at dilution of 1:100. Blue: DAPI for nuclear staining.

## Background

The protein encoded by this gene is similar to the mouse stromal membrane-associated protein-1. This similarity suggests that this human gene product is also a type II membrane glycoprotein involved in the erythropoietic stimulatory activity of stromal cells. Alternate splicing results in multiple transcript variants encoding different isoforms. [provided by RefSeq, Jul 2008]

Note: This product is for in vitro research use only