

CHTF18 Polyclonal Antibody

Catalog No: #30162



Package Size: #30162-1 50ul #30162-2 100ul

Orders: order@signalwayantibody.com
Support: tech@signalwayantibody.com

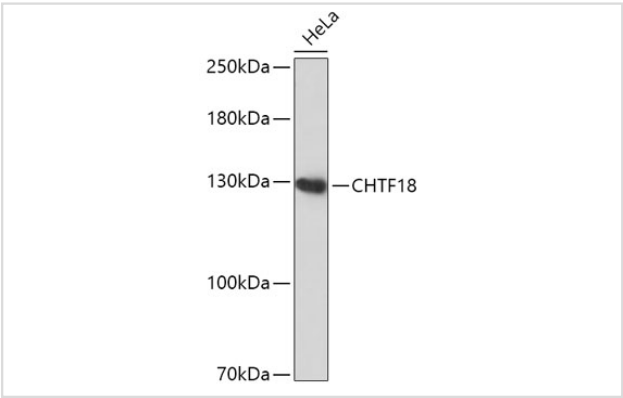
Description

Product Name	CHTF18 Polyclonal Antibody
Host Species	Rabbit
Clonality	Polyclonal
Isotype	IgG
Purification	Affinity purification
Applications	WB,IF
Species Reactivity	Human,Rat
Immunogen Description	Recombinant fusion protein of human CHTF18 (NP_071375.1).
Other Names	C16orf41, C321D2.2, C321D2.3, C321D2.4, CHL12, Ctf18, RUVBL
Accession No.	Swiss-Prot#:Q8WVB6NCBI Gene ID:63922
Uniprot	Q8WVB6
GeneID	63922;
Calculated MW	130kDa
Formulation	Avoid freeze / thaw cycles. Buffer: PBS with 50% glycerol, pH7.4.
Storage	Store at -20°C

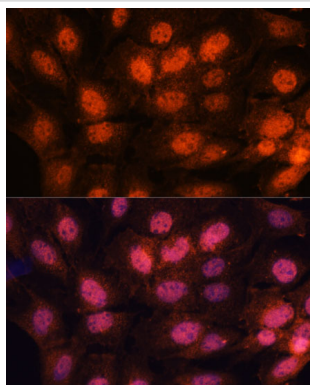
Application Details

WB 1:500 - 1:2000IF 1:50 - 1:200

Images



Western blot analysis of extracts of HeLa cells, using CHTF18 at 1:1000 dilution.



Immunofluorescence analysis of C6 cells using CHTF18 at dilution of 1:100. Blue: DAPI for nuclear staining.

Background

This gene encodes a protein which is a component of a replication factor C (RFC) complex, which loads proliferating cell nuclear antigen (PCNA) on to DNA during the S phase of cell cycle. The encoded protein may interact with other proteins, including RFC complex 3, to form a clamp loader complex that plays a role in sister chromatid cohesion during metaphase-anaphase transition. [provided by RefSeq, Jan 2016]

Note: This product is for in vitro research use only