

SLC25A22 Polyclonal Antibody

Catalog No: #30172



Package Size: #30172-1 50ul #30172-2 100ul

Orders: order@signalwayantibody.com
Support: tech@signalwayantibody.com

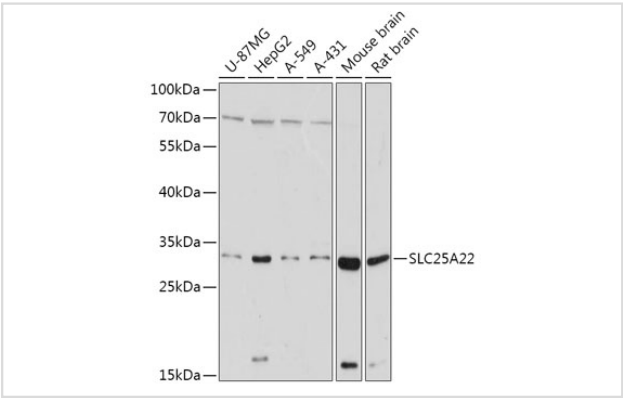
Description

Product Name	SLC25A22 Polyclonal Antibody
Host Species	Rabbit
Clonality	Polyclonal
Isotype	IgG
Purification	Affinity purification
Applications	WB,IF
Species Reactivity	Human,Mouse,Rat
Immunogen Description	Recombinant fusion protein of human SLC25A22 (NP_078974.1).
Other Names	EIEE3, GC-1, GC1, NET44
Accession No.	Swiss-Prot#:Q9H936NCBI Gene ID:79751
Uniprot	Q9H936
GeneID	79751;
Calculated MW	34kDa
Formulation	Avoid freeze / thaw cycles. Buffer: PBS with 50% glycerol, pH7.4.
Storage	Store at -20°C

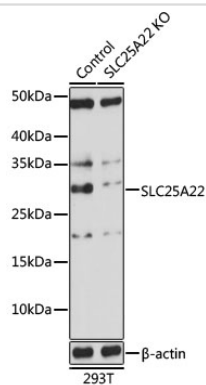
Application Details

WB 1:500 - 1:2000IF 1:50 - 1:200

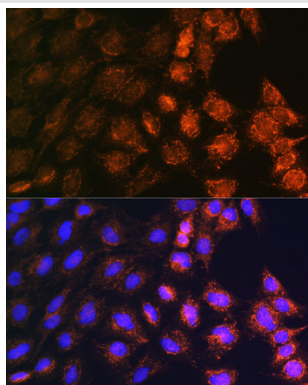
Images



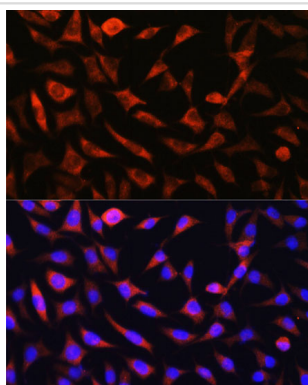
Western blot analysis of extracts of various cell lines, using SLC25A22 at 1:1000 dilution.



Western blot analysis of extracts from normal (control) and SLC25A22 knockout (KO) 293T cells, using SLC25A22 at 1:1000 dilution.



Immunofluorescence analysis of C6 cells using SLC25A22 at dilution of 1:100. Blue: DAPI for nuclear staining.



Immunofluorescence analysis of L929 cells using SLC25A22 at dilution of 1:100. Blue: DAPI for nuclear staining.

Background

This gene encodes a mitochondrial glutamate carrier. Mutations in this gene are associated with early infantile epileptic encephalopathy. Multiple alternatively spliced variants, encoding the same protein, have been identified.[provided by RefSeq, Jul 2010]

Note: This product is for in vitro research use only