

PIGM Polyclonal Antibody

Catalog No: #30190



Package Size: #30190-1 50ul #30190-2 100ul

Orders: order@signalwayantibody.com
Support: tech@signalwayantibody.com

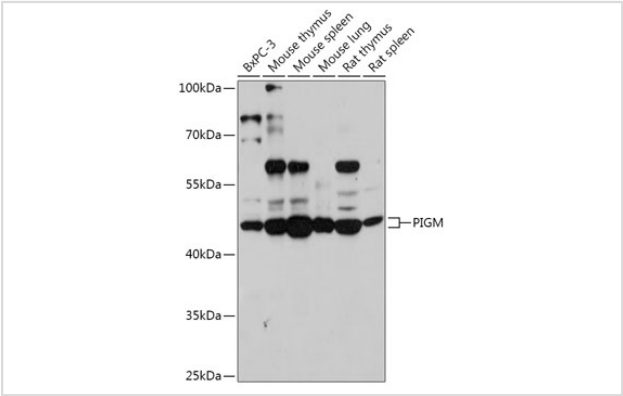
Description

Product Name	PIGM Polyclonal Antibody
Host Species	Rabbit
Clonality	Polyclonal
Isotype	IgG
Purification	Affinity purification
Applications	WB,IHC,IF
Species Reactivity	Human,Mouse,Rat
Immunogen Description	Recombinant fusion protein of human PIGM (NP_660150.1).
Other Names	GPI-MT-I;PIGM
Accession No.	Uniprot:Q9H3S5GeneID:93183
Uniprot	Q9H3S5
GeneID	93183
Calculated MW	49kDa
SDS-PAGE MW	49kDa
Formulation	PBS with 0.02% sodium azide,50% glycerol,pH7.3.
Storage	Store at -20°C. Avoid freeze / thaw cycles.

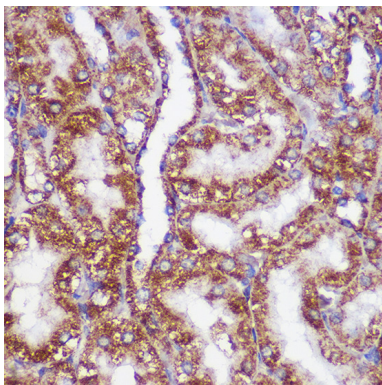
Application Details

WB 1:500 - 1:2000IHC 1:50 - 1:200IF 1:50 - 1:200

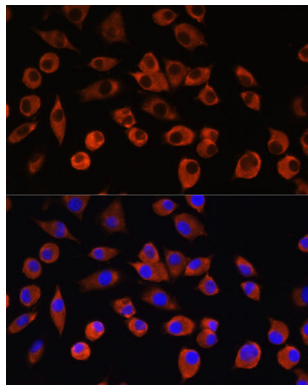
Images



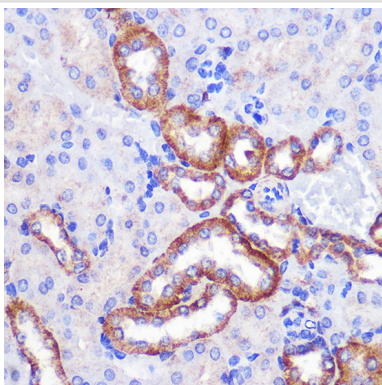
Western blot analysis of extracts of various cell lines, using PIGM antibody.



Immunohistochemistry of paraffin-embedded Rat kidney using PIGM Rabbit pAb.



Immunofluorescence analysis of L929 cells using PIGM antibody.



Immunohistochemistry of paraffin-embedded Mouse kidney using PIGM Rabbit pAb.

Background

This gene encodes a transmembrane protein that is located in the endoplasmic reticulum and is involved in GPI-anchor biosynthesis. The glycosylphosphatidylinositol (GPI)-anchor is a glycolipid which contains three mannose molecules in its core backbone. The GPI-anchor is found on many blood cells and serves to anchor proteins to the cell surface. This gene encodes a mannosyltransferase, GPI-MT-I, that transfers the first mannose to GPI on the luminal side of the endoplasmic reticulum. [provided by RefSeq, Jul 2008]

Note: This product is for in vitro research use only