

FBXL14 Polyclonal Antibody

Catalog No: #30203



Package Size: #30203-1 50ul #30203-2 100ul

Orders: order@signalwayantibody.com
Support: tech@signalwayantibody.com

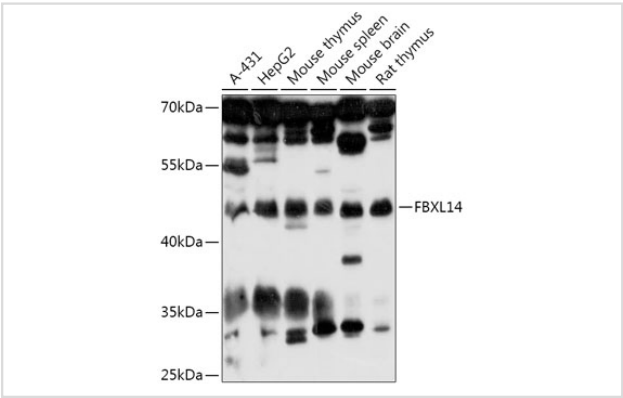
Description

Product Name	FBXL14 Polyclonal Antibody
Host Species	Rabbit
Clonality	Polyclonal
Isotype	IgG
Purification	Affinity purification
Applications	WB
Species Reactivity	Human,Mouse,Rat
Immunogen Description	Recombinant fusion protein of human FBXL14 (NP_689654.1).
Other Names	Fbl14
Accession No.	Swiss-Prot#:Q8N1E6NCBI Gene ID:144699
Uniprot	Q8N1E6
GeneID	144699;
Calculated MW	46kDa
Formulation	Avoid freeze / thaw cycles. Buffer: PBS with 50% glycerol, pH7.4.
Storage	Store at -20°C

Application Details

WB 1:500 - 1:2000

Images



Western blot analysis of extracts of various cell lines, using FBXL14 at 1:1000 dilution.

Background

Members of the F-box protein family, such as FBXL14, are characterized by an approximately 40-amino acid F-box motif. SCF complexes, formed by SKP1 (MIM 601434), cullin (see CUL1; MIM 603134), and F-box proteins, act as protein-ubiquitin ligases. F-box proteins interact with SKP1 through the F box, and they interact with ubiquitination targets through other protein interaction domains (Jin et al., 2004 [PubMed 15520277]).[supplied by OMIM, Mar 2008]

Note: This product is for in vitro research use only