

PDE3A Polyclonal Antibody

Catalog No: #30227



Package Size: #30227-1 50ul #30227-2 100ul

Orders: [order@signalwayantibody.com](mailto:order@signalwayantibody.com)  
Support: [tech@signalwayantibody.com](mailto:tech@signalwayantibody.com)

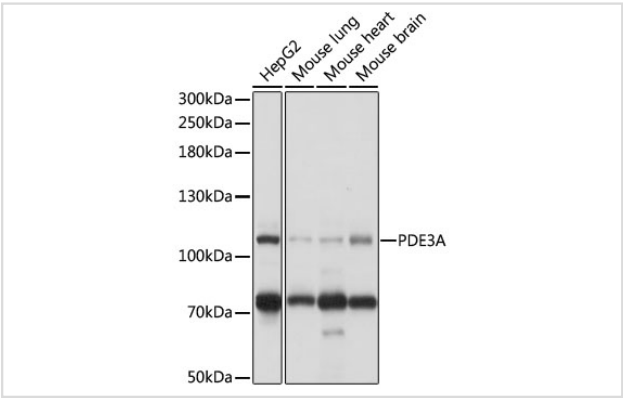
Description

Product Name	PDE3A Polyclonal Antibody
Host Species	Rabbit
Clonality	Polyclonal
Isotype	IgG
Purification	Affinity purification
Applications	WB,IHC,IF
Species Reactivity	Hu,Ms,Rt
Immunogen Description	Recombinant fusion protein of human PDE3A (NP_000912.3).
Other Names	HTNB; CGI-PDE; CGI-PDE A; CGI-PDE-A
Accession No.	Swiss-Prot#:Q14432NCBI Gene ID:5139
Uniprot	Q14432
GeneID	5139;
Calculated MW	125kDa
Formulation	Avoid freeze / thaw cycles. Buffer: PBS with 50% glycerol, pH7.4.
Storage	Store at -20°C

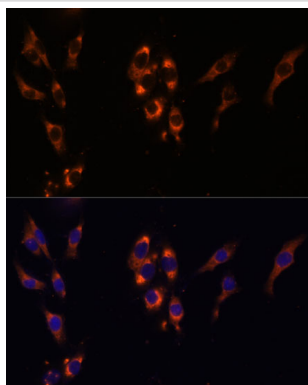
Application Details

WB 1:500 - 1:2000IHC 1:50 - 1:100IF 1:50 - 1:100

Images



Western blot analysis of extracts of various cell lines, using PDE3A antibody.



Immunofluorescence analysis of HeLa cells using PDE3A Polyclonal Antibody.

## Background

This gene encodes a member of the cGMP-inhibited cyclic nucleotide phosphodiesterase (cGI-PDE) family. cGI-PDE enzymes hydrolyze both cAMP and cGMP, and play critical roles in many cellular processes by regulating the amplitude and duration of intracellular cyclic nucleotide signals. The encoded protein mediates platelet aggregation and also plays important roles in cardiovascular function by regulating vascular smooth muscle contraction and relaxation. Inhibitors of the encoded protein may be effective in treating congestive heart failure. Alternatively spliced transcript variants encoding multiple isoforms have been observed for this gene.

Note: This product is for in vitro research use only