

PRKCA/PRKCB/PRKCD/PRKCE/PRKCH/PRKCQ  
Polyclonal Antibody

Catalog No: #30229

Package Size: #30229-1 50ul #30229-2 100ul

Orders: [order@signalwayantibody.com](mailto:order@signalwayantibody.com)  
Support: [tech@signalwayantibody.com](mailto:tech@signalwayantibody.com)

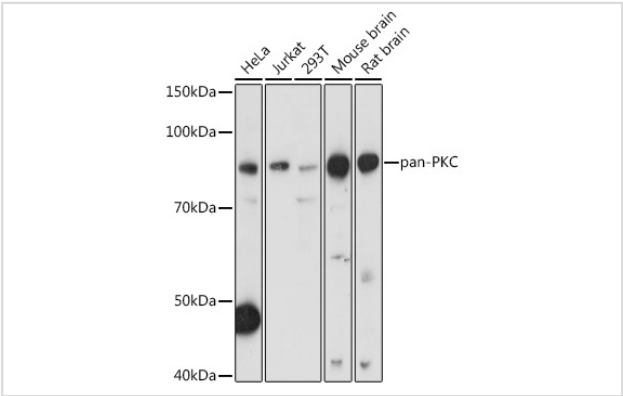
Description

Product Name	PRKCA/PRKCB/PRKCD/PRKCE/PRKCH/PRKCQ Polyclonal Antibody
Host Species	Rabbit
Clonality	Polyclonal
Isotype	IgG
Purification	Affinity purification
Applications	WB,IF
Species Reactivity	Human,Mouse,Rat
Immunogen Description	A synthetic peptide of human pan-PKC.
Other Names	PRKCA/PRKCB/PRKCD/PRKCE/PRKCH/PRKCQ
Accession No.	Uniprot:P17252/P05771/Q05655/Q02156/P24723/Q04759GeneID:5578/5579/5580/5581/5583/5588
Uniprot	P17252/P05771/Q05655/Q02156/P24723/Q04759
GeneID	5578/5579/5580/5581/5583/5588
Calculated MW	Refer to figures
SDS-PAGE MW	83kDa
Formulation	PBS with 0.02% sodium azide,50% glycerol,pH7.3.
Storage	Store at -20°C. Avoid freeze / thaw cycles.

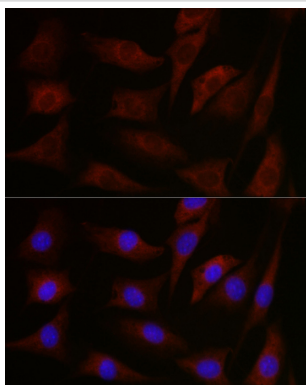
Application Details

WB 1:500 - 1:2000IF 1:50 - 1:200

Images



Western blot analysis of extracts of various cell lines, using pan-PKC antibody.



Immunofluorescence analysis of NIH-3T3 cells using pan-PKC Rabbit pAb.

## Background

Protein kinase C (PKC) is a family of serine- and threonine-specific protein kinases that can be activated by calcium and second messenger diacylglycerol. PKC family members phosphorylate a wide variety of protein targets and are known to be involved in diverse cellular signaling pathways. PKC family members also serve as major receptors for phorbol esters, a class of tumor promoters. Each member of the PKC family has a specific expression profile and is believed to play a distinct role in cells. The protein encoded by this gene is one of the PKC family members. This protein kinase has been reported to be involved in many different cellular functions, such as B cell activation, apoptosis induction, endothelial cell proliferation, and intestinal sugar absorption.

Note: This product is for in vitro research use only