

AKT2 Polyclonal Antibody

Catalog No: #30259



Package Size: #30259-1 50ul #30259-2 100ul

Orders: order@signalwayantibody.com
Support: tech@signalwayantibody.com

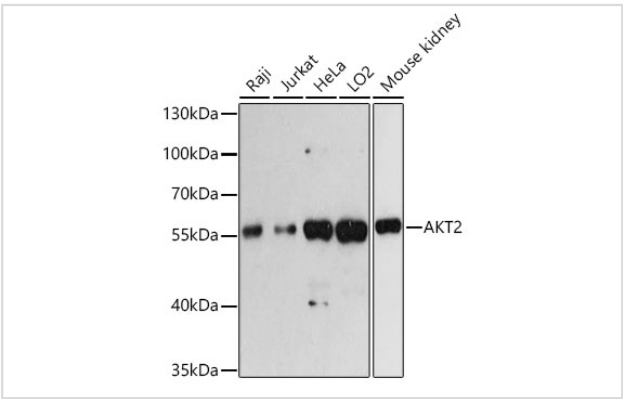
Description

Product Name	AKT2 Polyclonal Antibody
Host Species	Rabbit
Clonality	Polyclonal
Isotype	IgG
Purification	Affinity purification
Applications	WB,IHC,IF
Species Reactivity	Human,Mouse,Rat
Immunogen Description	Recombinant protein of human AKT2
Other Names	AKT2;HIHGH;PKBB;PKBBETA;PRKBB;RAC-BETA
Accession No.	Uniprot:P31751GenelD:208
Uniprot	P31751
GenelD	208
Calculated MW	60kDa
SDS-PAGE MW	60kDa
Formulation	PBS with 0.02% sodium azide,50% glycerol,pH7.3.
Storage	Store at -20°C. Avoid freeze / thaw cycles.

Application Details

WB 1:500 - 1:2000IHC 1:50 - 1:100IF 1:50 - 1:100

Images



Western blot analysis of extracts of various cell lines, using AKT2 antibody.

Background

This gene is a putative oncogene encoding a protein belonging to a subfamily of serine/threonine kinases containing SH2-like (Src homology 2-like) domains. The gene was shown to be amplified and overexpressed in 2 of 8 ovarian carcinoma cell lines and 2 of 15 primary ovarian tumors. Overexpression contributes to the malignant phenotype of a subset of human ductal pancreatic cancers. The encoded protein is a general protein

kinase capable of phosphorylating several known proteins.

Note: This product is for in vitro research use only