

TUBB3 Monoclonal Antibody

Catalog No: #30323



Package Size: #30323-1 50ul #30323-2 100ul

Orders: order@signalwayantibody.com
Support: tech@signalwayantibody.com

Description

Product Name	TUBB3 Monoclonal Antibody
Host Species	Mouse
Clonality	Monoclonal
Isotype	IgG
Purification	Affinity purification
Applications	WB IHC IF
Species Reactivity	Human,Mouse,Rat
Immunogen Description	Recombinant protein of human TUBB3.
Other Names	TUBB3; CDCBM; CDCBM1; CFEOM3; CFEOM3A; FEOM3; TUBB4; beta-4; tubulin beta-3 chain
Accession No.	Swiss-Prot#:Q13509NCBI Gene ID:10381
Uniprot	Q13509
GeneID	10381;
Calculated MW	55kDa
Formulation	Avoid freeze / thaw cycles. Buffer: PBS with 50% glycerol, pH7.4.
Storage	Store at -20°C

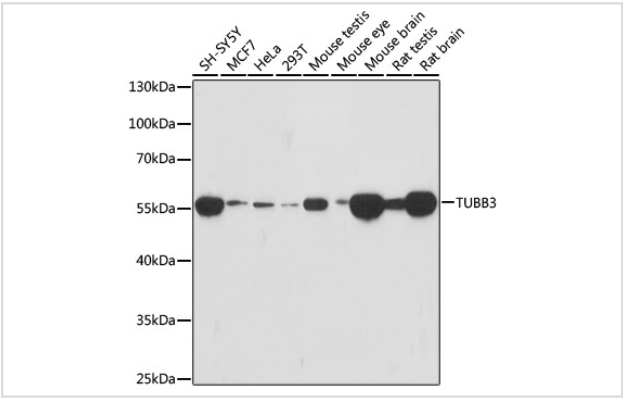
Application Details

WB 1:500 - 1:2000

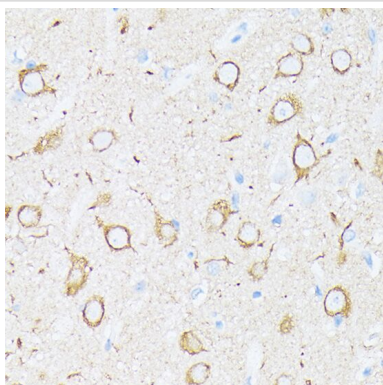
IHC 1:50 - 1:200

IF 1:50 - 1:200

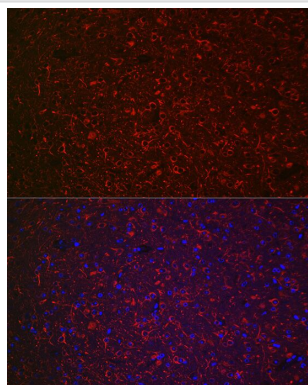
Images



Western blot analysis of extracts of various cell lines, using TUBB3 at 1:1000 dilution.



Immunohistochemistry of paraffin-embedded mouse brain using β III-Tubulin/ β 3-Tubulin at dilution of 100 (40x lens).



Immunofluorescence analysis of mouse brain using β III-Tubulin/ β 3-Tubulin Mouse mAb at dilution of 1:100 (40x lens). Blue: DAPI for nuclear staining.

Background

This gene encodes a class III member of the beta tubulin protein family. Beta tubulins are one of two core protein families (alpha and beta tubulins) that heterodimerize and assemble to form microtubules. This protein is primarily expressed in neurons and may be involved in neurogenesis and axon guidance and maintenance. Mutations in this gene are the cause of congenital fibrosis of the extraocular muscles type 3. Alternate splicing results in multiple transcript variants. A pseudogene of this gene is found on chromosome 6.

Note: This product is for in vitro research use only