

EDF1 Polyclonal Antibody

Catalog No: #30414



Package Size: #30414-1 50ul #30414-2 100ul

Orders: order@signalwayantibody.com
Support: tech@signalwayantibody.com

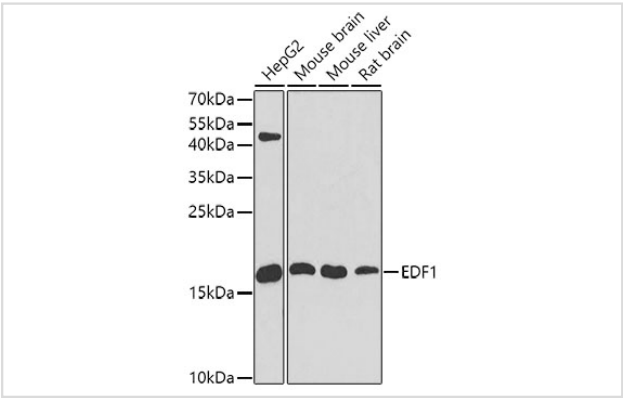
Description

Product Name	EDF1 Polyclonal Antibody
Host Species	Rabbit
Clonality	Polyclonal
Isotype	IgG
Purification	Affinity purification
Applications	WB,IHC,IF
Species Reactivity	Human,Mouse,Rat
Immunogen Description	Recombinant fusion protein of human EDF1 (NP_003783.1).
Other Names	EDF1; CFAP280; EDF-1; MBF1; endothelial differentiation-related factor 1
Accession No.	Swiss-Prot#:O60869NCBI Gene ID:8721
Uniprot	O60869
GeneID	8721;
Calculated MW	16kDa
Formulation	Avoid freeze / thaw cycles. Buffer: PBS with 50% glycerol, pH7.4.
Storage	Store at -20°C

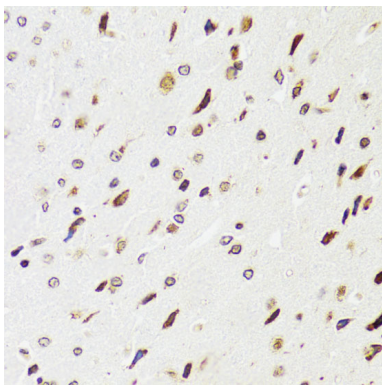
Application Details

WB 1:500 - 1:2000IHC 1:50 - 1:100IF 1:50 - 1:100

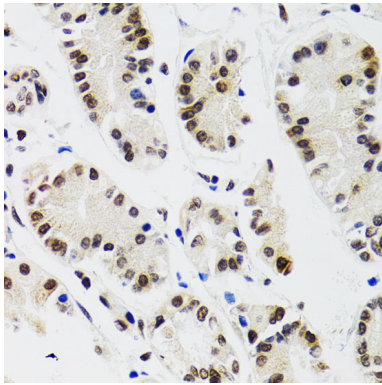
Images



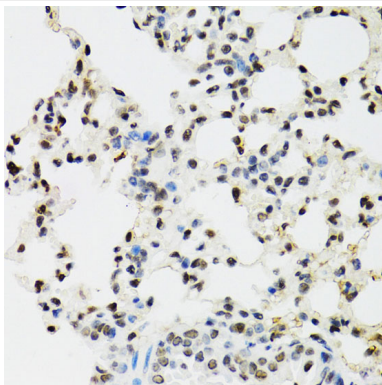
Western blot analysis of extracts of various cell lines, using EDF1 at 1:1000 dilution.



Immunohistochemistry of paraffin-embedded rat brain using EDF1 at dilution of 1:100 (40x lens).



Immunohistochemistry of paraffin-embedded human gastric cancer using EDF1 at dilution of 1:100 (40x lens).



Immunohistochemistry of paraffin-embedded mouse lung using EDF1 at dilution of 1:100 (40x lens).

Background

This gene encodes a protein that may regulate endothelial cell differentiation, lipid metabolism, and hormone-induced cardiomyocyte hypertrophy. The encoded protein has also been found to act as a transcriptional coactivator by interconnecting the general transcription factor TATA element-binding protein (TBP) and gene-specific activators. Alternate splicing results in multiple transcript variants.

Note: This product is for in vitro research use only