

## SLC6A17 Antibody

Catalog No: #46116

Package Size: #46116-1 50ul #46116-2 100ul

Orders: [order@signalwayantibody.com](mailto:order@signalwayantibody.com)Support: [tech@signalwayantibody.com](mailto:tech@signalwayantibody.com)

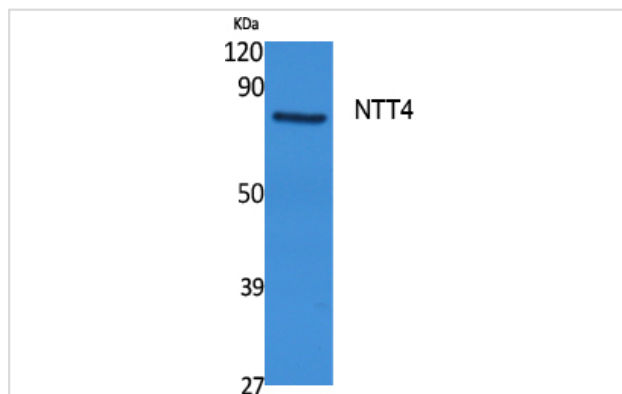
## Description

Product Name	SLC6A17 Antibody
Host Species	Rabbit
Clonality	Polyclonal
Purification	Immunogen affinity purified
Applications	WB
Species Reactivity	Hu Ms Rt
Specificity	SLC6A17 Antibody detects endogenous levels of total SLC6A17
Immunogen Type	Peptide
Immunogen Description	A synthesized peptide derived from human SLC6A17
Target Name	SLC6A17
Other Names	SLC6A17, NTT4
Accession No.	Swiss-Prot#: Q9H1V8NCBI Gene ID:388662
Uniprot	Q9H1V8
GeneID	388662;
Calculated MW	81 kDa
Concentration	1.0mg/mL
Formulation	Liquid in PBS containing 50% glycerol, 0.5% BSA and 0.02% sodium azide.
Storage	Store at -20°C

## Application Details

Western blotting: 1:1000-3000

## Images



Western Blot analysis of extracts from rat stomach, using NTT4 Polyclonal Antibody. Secondary antibody was diluted at 1:20000

---

Note: This product is for in vitro research use only