

Pan Acetyl-Lysine pAb

Catalog No: #30416



Package Size: #30416-1 50ul #30416-2 100ul

Orders: order@signalwayantibody.com
Support: tech@signalwayantibody.com

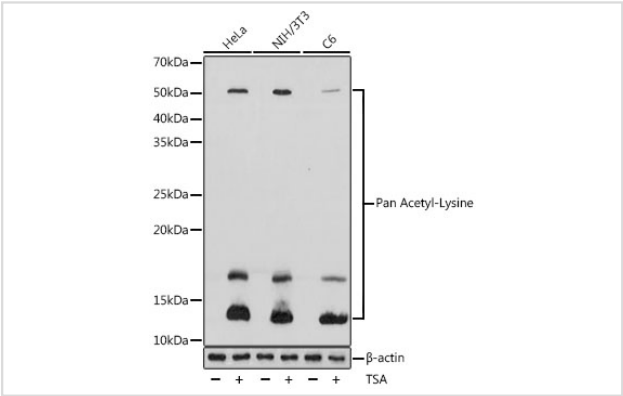
Description

Product Name	Pan Acetyl-Lysine pAb
Host Species	Rabbit
Clonality	Polyclonal
Isotype	IgG
Purification	Affinity purification
Applications	WB
Species Reactivity	Human,Mouse,Rat
Immunogen Description	A synthetic peptide corresponding to a sequence containing acetylated K.
Calculated MW	Refer to Figures
SDS-PAGE MW	Refer to figures
Formulation	PBS with 0.02% sodium azide,50% glycerol,pH7.3.
Storage	Store at -20°C. Avoid freeze / thaw cycles.

Application Details

WB 1:500 - 1:1000

Images



Western blot analysis of extracts of various cell lines, using Pan Acetyl-Lysine antibody.

Note: This product is for in vitro research use only