

SQLE Polyclonal Antibody

Catalog No: #30418

Package Size: #30418-1 50ul #30418-2 100ul

Orders: order@signalwayantibody.com

Support: tech@signalwayantibody.com

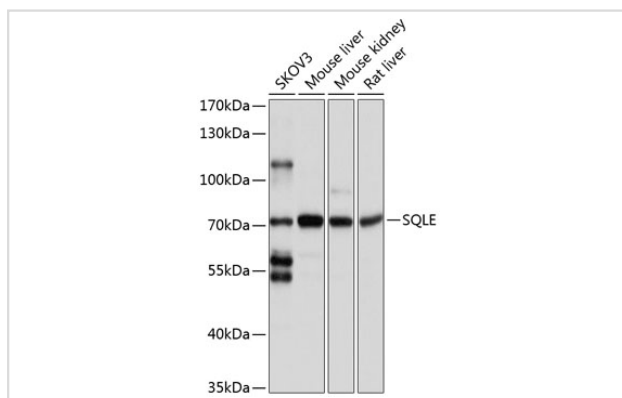
Description

| | |
|-----------------------|---|
| Product Name | SQLE Polyclonal Antibody |
| Host Species | Rabbit |
| Clonality | Polyclonal |
| Isotype | IgG |
| Purification | Affinity purification |
| Applications | WB,IHC,IF |
| Species Reactivity | Human,Mouse,Rat |
| Immunogen Description | Recombinant fusion protein of human SQLE (NP_003120.2). |
| Other Names | SQLE; squalene epoxidase |
| Accession No. | Swiss-Prot#:Q14534NCBI Gene ID:6713 |
| Uniprot | Q14534 |
| GeneID | 6713; |
| Calculated MW | 71kDa |
| Formulation | Avoid freeze / thaw cycles. Buffer: PBS with 50% glycerol, pH7.4. |
| Storage | Store at -20°C |

Application Details

WB □ 1:500 - 1:2000 IHC □ 1:50 - 1:100 IF □ 1:50 - 1:100

Images



Western blot analysis of extracts of various cell lines, using SQLE at 1:1000 dilution.

Background

Squalene epoxidase catalyzes the first oxygenation step in sterol biosynthesis and is thought to be one of the rate-limiting enzymes in this pathway.

Note: This product is for in vitro research use only