

RNF168 Polyclonal Antibody

Catalog No: #30467



Package Size: #30467-1 50ul #30467-2 100ul

Orders: order@signalwayantibody.com
Support: tech@signalwayantibody.com

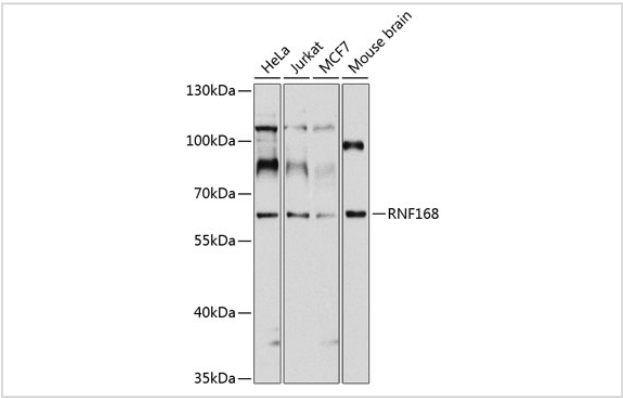
Description

Product Name	RNF168 Polyclonal Antibody
Host Species	Rabbit
Clonality	Polyclonal
Isotype	IgG
Purification	Affinity purification
Applications	WB
Species Reactivity	Human,Mouse
Immunogen Description	Recombinant fusion protein of human RNF168 (NP_689830.2).
Other Names	RNF168; hRNF168; ring finger protein 168
Accession No.	Swiss-Prot#:Q8IYW5NCBI Gene ID:165918
Uniprot	Q8IYW5
GeneID	165918;
Calculated MW	65kDa
Formulation	Avoid freeze / thaw cycles. Buffer: PBS with 50% glycerol, pH7.4.
Storage	Store at -20°C

Application Details

WB 1:1000 - 1:2000

Images



Western blot analysis of extracts of various cell lines, using RNF168 at 1:1000 dilution.

Background

This gene encodes an E3 ubiquitin ligase protein that contains a RING finger, a motif present in a variety of functionally distinct proteins and known to be involved in protein-DNA and protein-protein interactions. The protein is involved in DNA double-strand break (DSB) repair. Mutations in this gene result in Riddle syndrome.

Note: This product is for in vitro research use only