

SRSF2 Polyclonal Antibody

Catalog No: #30475



Package Size: #30475-1 50ul #30475-2 100ul

Orders: order@signalwayantibody.com
Support: tech@signalwayantibody.com

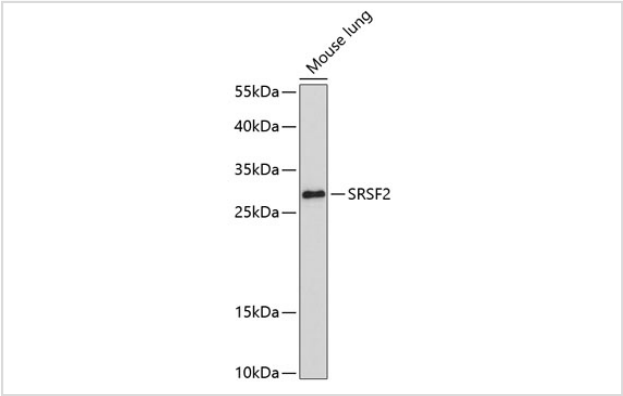
Description

Product Name	SRSF2 Polyclonal Antibody
Host Species	Rabbit
Clonality	Polyclonal
Isotype	IgG
Purification	Affinity purification
Applications	WB,IHC
Species Reactivity	Human,Mouse,Rat
Immunogen Description	Recombinant fusion protein of human SRSF2 (NP_003007.2).
Other Names	SRSF2;PR264;SC-35;SC35;SFRS2;SFRS2A;SRp30b
Accession No.	Uniprot:Q01130GeneID:6427
Uniprot	Q01130
GeneID	6427
Calculated MW	28kDa
SDS-PAGE MW	28kDa/32kDa
Formulation	PBS with 0.02% sodium azide,50% glycerol,pH7.3.
Storage	Store at -20°C. Avoid freeze / thaw cycles.

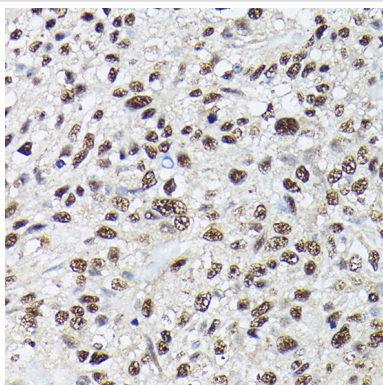
Application Details

WB 1:500 - 1:2000IHC 1:50 - 1:200

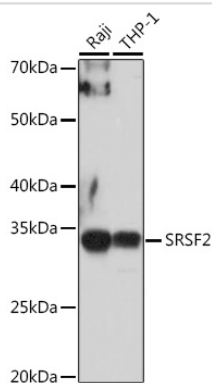
Images



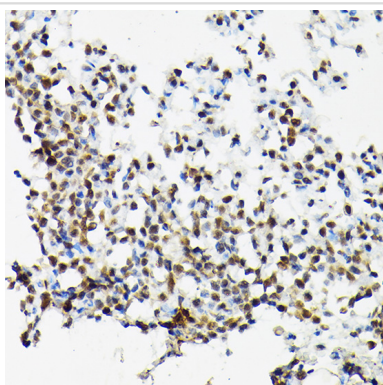
Western blot analysis of extracts of mouse lung, using SRSF2 antibody.



Immunohistochemistry of paraffin-embedded Human lung using SRSF2 antibody.



Western blot analysis of extracts of various cell lines, using SRSF2 antibody.



Immunohistochemistry of paraffin-embedded Rat lung using SRSF2 antibody.

Background

The protein encoded by this gene is a member of the serine/arginine (SR)-rich family of pre-mRNA splicing factors, which constitute part of the spliceosome. Each of these factors contains an RNA recognition motif (RRM) for binding RNA and an RS domain for binding other proteins. The RS domain is rich in serine and arginine residues and facilitates interaction between different SR splicing factors. In addition to being critical for mRNA splicing, the SR proteins have also been shown to be involved in mRNA export from the nucleus and in translation. Two transcript variants encoding the same protein and one non-coding transcript variant have been found for this gene. In addition, a pseudogene of this gene has been found on chromosome 11.

Note: This product is for in vitro research use only