

ATP6V1E1 Polyclonal Antibody

Catalog No: #30481



Package Size: #30481-1 50ul #30481-2 100ul

Orders: order@signalwayantibody.com
Support: tech@signalwayantibody.com

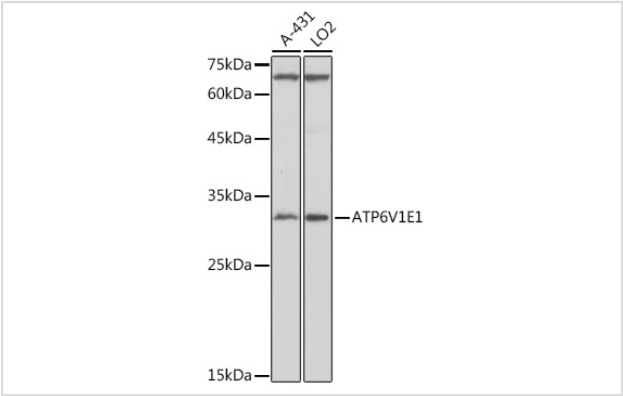
Description

Product Name	ATP6V1E1 Polyclonal Antibody
Host Species	Rabbit
Clonality	Polyclonal
Isotype	IgG
Purification	Affinity purification
Applications	WB,IHC,IF
Species Reactivity	Human,Mouse,Rat
Immunogen Description	Recombinant fusion protein of human ATP6V1E1 (NP_001687.1).
Other Names	ATP6V1E1;ATP6E;ATP6E2;ATP6V1E;P31;Vma4;ARCL2C
Accession No.	Uniprot:P36543GenelD:529
Uniprot	P36543
GenelD	529
Calculated MW	35kDa
SDS-PAGE MW	31KDa
Formulation	PBS with 0.02% sodium azide,50% glycerol,pH7.3.
Storage	Store at -20°C. Avoid freeze / thaw cycles.

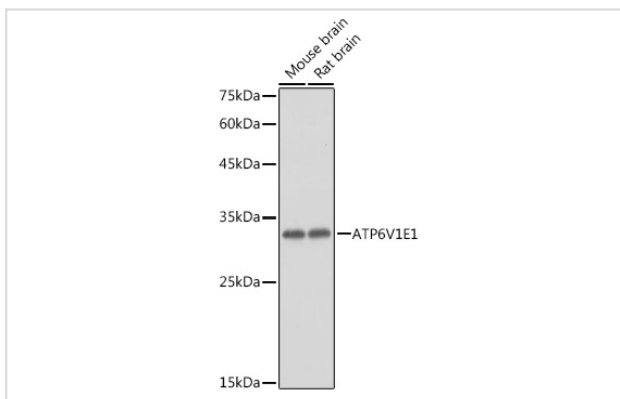
Application Details

WB 1:1000 - 1:2000IHC 1:50 - 1:200IF 1:50 - 1:200

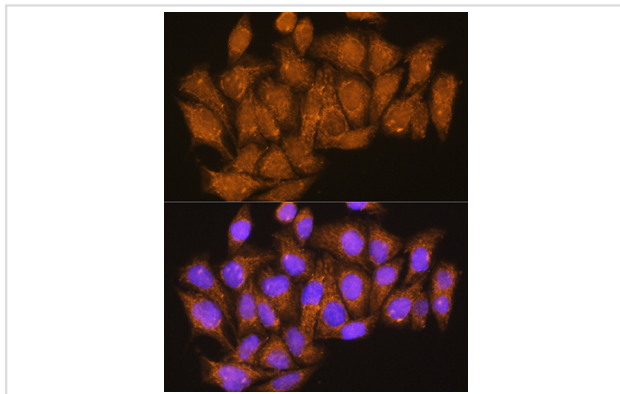
Images



Western blot analysis of extracts of various cell lines, using ATP6V1E1 antibody.



Western blot analysis of extracts of various cell lines, using ATP6V1E1 antibody.



Immunofluorescence analysis of HeLa cells using ATP6V1E1 Rabbit pAb.

Background

This gene encodes a component of vacuolar ATPase (V-ATPase), a multisubunit enzyme that mediates acidification of eukaryotic intracellular organelles. V-ATPase dependent organelle acidification is necessary for such intracellular processes as protein sorting, zymogen activation, receptor-mediated endocytosis, and synaptic vesicle proton gradient generation. V-ATPase is composed of a cytosolic V1 domain and a transmembrane V0 domain. The V1 domain consists of three A, three B, and two G subunits, as well as a C, D, E, F, and H subunit. The V1 domain contains the ATP catalytic site. This gene encodes alternate transcriptional splice variants, encoding different V1 domain E subunit isoforms. Pseudogenes for this gene have been found in the genome.

Note: This product is for in vitro research use only