

BFSP1 Polyclonal Antibody

Catalog No: #30483



Package Size: #30483-1 50ul #30483-2 100ul

Orders: order@signalwayantibody.com
Support: tech@signalwayantibody.com

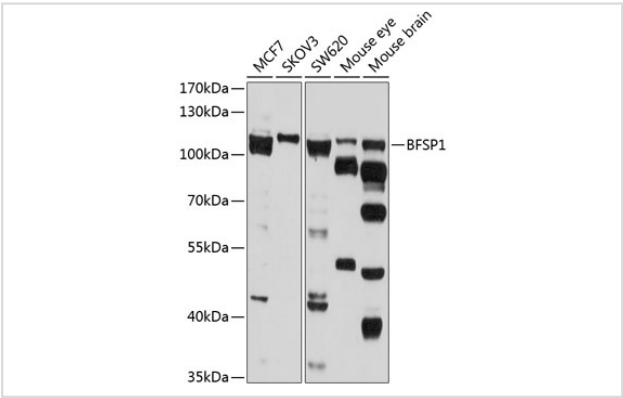
Description

Product Name	BFSP1 Polyclonal Antibody
Host Species	Rabbit
Clonality	Polyclonal
Isotype	IgG
Purification	Affinity purification
Applications	WB
Species Reactivity	Human,Mouse,Rat
Immunogen Description	Recombinant fusion protein of human BFSP1 (NP_001155177.1).
Other Names	BFSP1; CP115; CP94; CTRCT33; LIFL-H; filensin
Accession No.	Swiss-Prot#:Q12934NCBI Gene ID:631
Uniprot	Q12934
GeneID	631;
Calculated MW	110kDa
Formulation	Avoid freeze / thaw cycles. Buffer: PBS with 50% glycerol, pH7.4.
Storage	Store at -20°C

Application Details

WB 1:1000 - 1:2000

Images



Western blot analysis of extracts of various cell lines, using BFSP1 at 1:1000 dilution.

Background

This gene encodes a lens-specific intermediate filament-like protein named filensin. The encoded protein is expressed in lens fiber cells after differentiation has begun. This protein functions as a component of the beaded filament which is a cytoskeletal structure found in lens fiber cells. Mutations in this gene are the cause of autosomal recessive cortical juvenile-onset cataract. Alternate splicing results in multiple transcript variants.

Note: This product is for in vitro research use only