

RCBTB2 Polyclonal Antibody

Catalog No: #30485



Package Size: #30485-1 50ul #30485-2 100ul

Orders: order@signalwayantibody.com
Support: tech@signalwayantibody.com

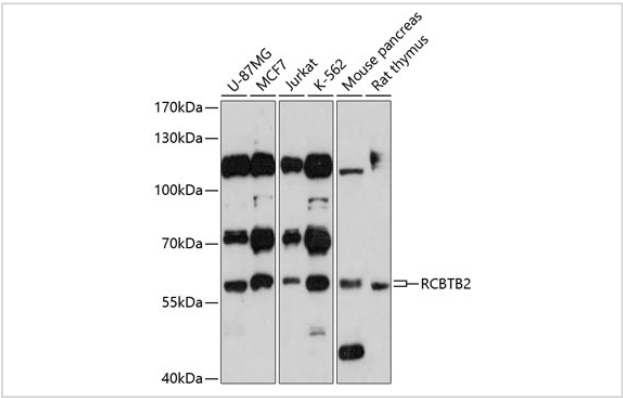
Description

Product Name	RCBTB2 Polyclonal Antibody
Host Species	Rabbit
Clonality	Polyclonal
Isotype	IgG
Purification	Affinity purification
Applications	WB
Species Reactivity	Human,Mouse,Rat
Immunogen Description	Recombinant fusion protein of human RCBTB2 (NP_001259.1).
Other Names	RCBTB2; CHC1L; RLG; RCC1 and BTB domain-containing protein 2
Accession No.	Swiss-Prot#:O95199NCBI Gene ID:1102
Uniprot	O95199
GeneID	1102;
Calculated MW	60kDa
Formulation	Avoid freeze / thaw cycles. Buffer: PBS with 50% glycerol, pH7.4.
Storage	Store at -20°C

Application Details

WB 1:500 - 1:2000

Images



Western blot analysis of extracts of various cell lines, using RCBTB2 at 1:3000 dilution.

Background

This gene encodes a protein containing two C-terminal BTB/POZ domains that is related to regulator of chromosome condensation (RCC). The encoded protein may act as a guanine nucleotide exchange factor. This gene is observed to be lost or underexpressed in prostate cancers. There is a pseudogene of this gene on chromosome 10. Alternative splicing results in multiple transcript variants.

Note: This product is for in vitro research use only