

CPA1 Polyclonal Antibody

Catalog No: #30489



Package Size: #30489-1 50ul #30489-2 100ul

Orders: order@signalwayantibody.com
Support: tech@signalwayantibody.com

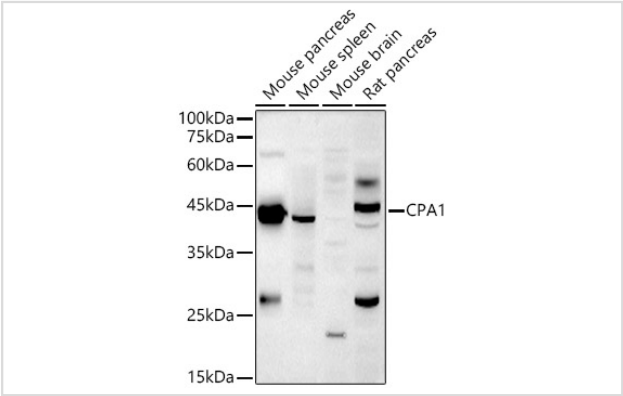
Description

Product Name	CPA1 Polyclonal Antibody
Host Species	Rabbit
Clonality	Polyclonal
Isotype	IgG
Purification	Affinity purification
Applications	WB
Species Reactivity	Mouse,Rat
Immunogen Description	Recombinant fusion protein of human CPA1 (NP_001859.1).
Other Names	CPA1;CPA
Accession No.	Uniprot:P15085GenelD:1357
Uniprot	P15085
GenelD	1357
Calculated MW	Refer to figures
SDS-PAGE MW	45KDa
Formulation	PBS with 0.02% sodium azide,50% glycerol,pH7.3.
Storage	Store at -20°C. Avoid freeze / thaw cycles.

Application Details

WB 1:500 - 1:2000

Images



Western blot analysis of extracts of various cell lines, using CPA1 antibody.

Background

This gene encodes a member of the carboxypeptidase A family of zinc metalloproteases. This enzyme is produced in the pancreas and preferentially cleaves C-terminal branched-chain and aromatic amino acids from dietary proteins. This gene and several family members are present in a gene cluster on chromosome 7. Mutations in this gene may be linked to chronic pancreatitis, while elevated protein levels may be associated with pancreatic

cancer.

Note: This product is for in vitro research use only