

PPP1CC Polyclonal Antibody

Catalog No: #30514



Package Size: #30514-1 50ul #30514-2 100ul

Orders: order@signalwayantibody.com
Support: tech@signalwayantibody.com

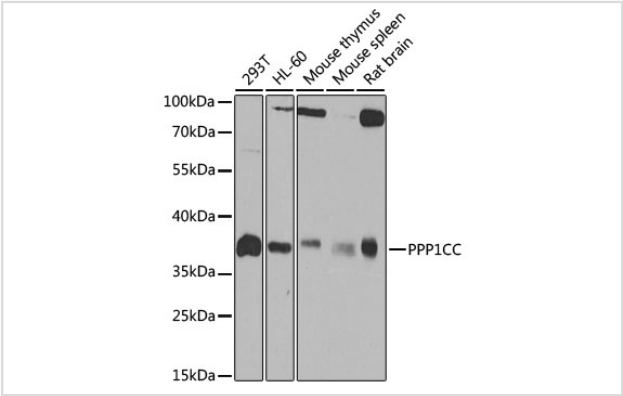
Description

| | |
|-----------------------|---|
| Product Name | PPP1CC Polyclonal Antibody |
| Host Species | Rabbit |
| Clonality | Polyclonal |
| Isotype | IgG |
| Purification | Affinity purification |
| Applications | WB |
| Species Reactivity | Human,Mouse,Rat |
| Immunogen Description | Recombinant fusion protein of human PPP1CC (NP_002701.1). |
| Other Names | PPP1CC;PP-1G;PP1C;PPP1G |
| Accession No. | Uniprot:P36873GenelD:5501 |
| Uniprot | P36873 |
| GenelD | 5501 |
| Calculated MW | 38kDa |
| SDS-PAGE MW | 38kDa |
| Formulation | PBS with 0.02% sodium azide,50% glycerol,pH7.3. |
| Storage | Store at -20°C. Avoid freeze / thaw cycles. |

Application Details

WB 1:200 - 1:2000

Images



Western blot analysis of extracts of various cell lines, using PPP1CC antibody.

Background

The protein encoded by this gene belongs to the protein phosphatase family, PP1 subfamily. PP1 is an ubiquitous serine/threonine phosphatase that regulates many cellular processes, including cell division. It is expressed in mammalian cells as three closely related isoforms, alpha, beta/delta and gamma, which have distinct localization patterns. This gene encodes the gamma isozyme. Alternatively spliced transcript variants encoding different

isoforms have been found for this gene.

Note: This product is for in vitro research use only