

## DNALI1 Polyclonal Antibody

Catalog No: #30532

Package Size: #30532-1 50ul #30532-2 100ul

Orders: [order@signalwayantibody.com](mailto:order@signalwayantibody.com)Support: [tech@signalwayantibody.com](mailto:tech@signalwayantibody.com)

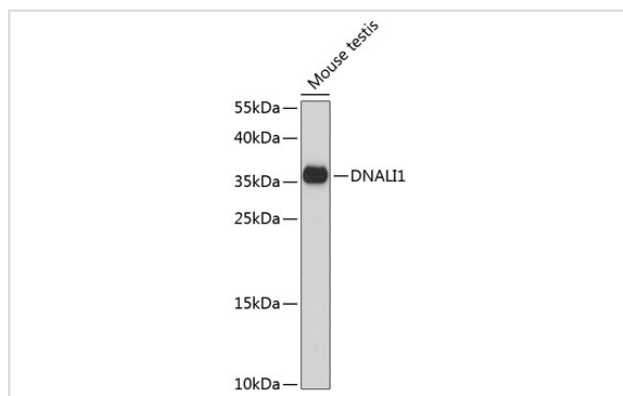
## Description

Product Name	DNALI1 Polyclonal Antibody
Host Species	Rabbit
Clonality	Polyclonal
Isotype	IgG
Purification	Affinity purification
Applications	WB
Species Reactivity	Mouse
Immunogen Description	Recombinant fusion protein of human DNALI1 (NP_003453.2).
Other Names	DNALI1; P28; dJ423B22.5; hp28; dynein axonemal light intermediate chain 1
Accession No.	Swiss-Prot#:O14645NCBI Gene ID:7802
Uniprot	O14645
GeneID	7802;
Calculated MW	36kDa
Formulation	Avoid freeze / thaw cycles. Buffer: PBS with 50% glycerol, pH7.4.
Storage	Store at -20°C

## Application Details

WB 1:500 - 1:2000

## Images



Western blot analysis of extracts of mouse testis, using DNALI1 at 1:1000 dilution.

## Background

This gene is the human homolog of the *Chlamydomonas* inner dynein arm gene, p28. The precise function of this gene is not known, however, it is a potential candidate for immotile cilia syndrome (ICS). Ultrastructural defects of the inner dynein arms are seen in patients with ICS. Immotile mutant strains of *Chlamydomonas*, a biflagellated algae, exhibit similar defects.

---

Note: This product is for in vitro research use only