

MAP7 Polyclonal Antibody

Catalog No: #30539



Package Size: #30539-1 50ul #30539-2 100ul

Orders: order@signalwayantibody.com
Support: tech@signalwayantibody.com

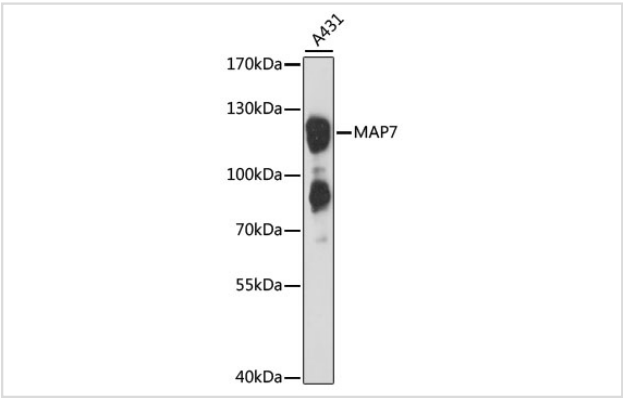
Description

Product Name	MAP7 Polyclonal Antibody
Host Species	Rabbit
Clonality	Polyclonal
Isotype	IgG
Purification	Affinity purification
Applications	WB
Species Reactivity	Human
Immunogen Description	Recombinant fusion protein of human MAP7 (NP_003971.1).
Other Names	MAP7; E-MAP-115; EMAP115; ensconsin
Accession No.	Swiss-Prot#:Q14244NCBI Gene ID:9053
Uniprot	Q14244
GeneID	9053;
Calculated MW	120kDa
Formulation	Avoid freeze / thaw cycles. Buffer: PBS with 50% glycerol, pH7.4.
Storage	Store at -20°C

Application Details

WB 1:500 - 1:2000

Images



Western blot analysis of extracts of A-431 cells, using MAP7 at 1:3000 dilution.

Background

The product of this gene is a microtubule-associated protein that is predominantly expressed in cells of epithelial origin. Microtubule-associated proteins are thought to be involved in microtubule dynamics, which is essential for cell polarization and differentiation. This protein has been shown to be able to stabilize microtubules, and may serve to modulate microtubule functions. Studies of the related mouse protein also suggested an essential role in microtubule function required for spermatogenesis. Multiple alternatively spliced transcript variants encoding different isoforms have been found

for this gene.

Note: This product is for in vitro research use only