

SAFB2 Polyclonal Antibody

Catalog No: #30547



Package Size: #30547-1 50ul #30547-2 100ul

Orders: order@signalwayantibody.com
Support: tech@signalwayantibody.com

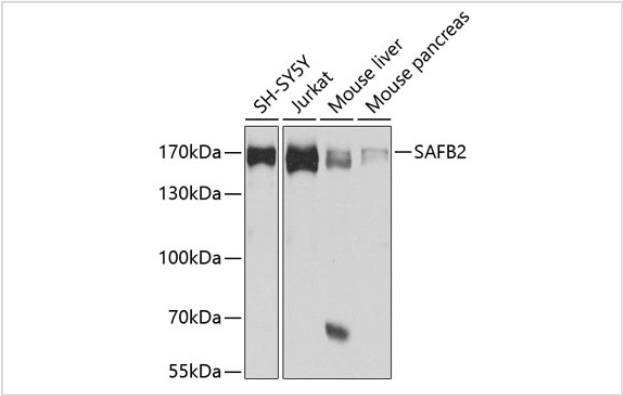
Description

| | |
|-----------------------|--|
| Product Name | SAFB2 Polyclonal Antibody |
| Host Species | Rabbit |
| Clonality | Polyclonal |
| Isotype | IgG |
| Purification | Affinity purification |
| Applications | WB |
| Species Reactivity | Human,Mouse,Rat |
| Immunogen Description | Recombinant fusion protein of human SAFB2 (NP_055464.1). |
| Other Names | SAFB2 |
| Accession No. | Uniprot:Q14151GenelD:9667 |
| Uniprot | Q14151 |
| GenelD | 9667 |
| Calculated MW | 160kDa |
| SDS-PAGE MW | 160kDa |
| Formulation | PBS with 0.02% sodium azide,50% glycerol,pH7.3. |
| Storage | Store at -20°C. Avoid freeze / thaw cycles. |

Application Details

WB 1:1000 - 1:2000

Images



Western blot analysis of extracts of various cell lines, using SAFB2 antibody.

Background

The protein encoded by this gene, along with its paralog (scaffold attachment factor B1), is a repressor of estrogen receptor alpha. The encoded protein binds scaffold/matrix attachment region (S/MAR) DNA and is involved in cell cycle regulation, apoptosis, differentiation, the stress response, and regulation of immune genes.

Note: This product is for in vitro research use only