

SLC25A15 Polyclonal Antibody

Catalog No: #30556



Package Size: #30556-1 50ul #30556-2 100ul

Orders: order@signalwayantibody.com
Support: tech@signalwayantibody.com

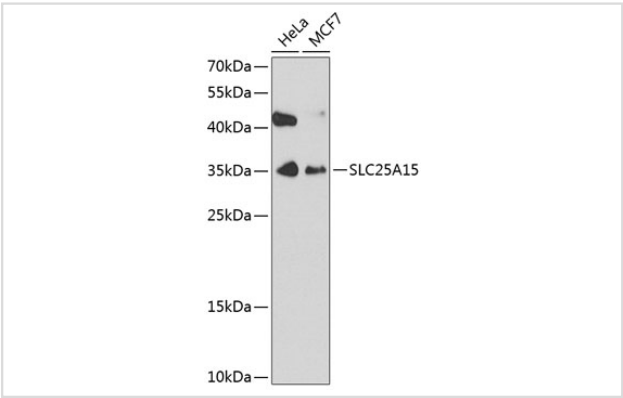
Description

Product Name	SLC25A15 Polyclonal Antibody
Host Species	Rabbit
Clonality	Polyclonal
Isotype	IgG
Purification	Affinity purification
Applications	WB
Species Reactivity	Human
Immunogen Description	Recombinant fusion protein of human SLC25A15 (NP_055067.1).
Other Names	SLC25A15; D13S327; HHH; ORC1; ORNT1; solute carrier family 25 member 15
Accession No.	Swiss-Prot#:Q9Y619NCBI Gene ID:10166
Uniprot	Q9Y619
GeneID	10166;
Calculated MW	35kDa
Formulation	Avoid freeze / thaw cycles. Buffer: PBS with 50% glycerol, pH7.4.
Storage	Store at -20°C

Application Details

WB 1:200 - 1:2000

Images



Western blot analysis of extracts of various cell lines, using SLC25A15 at 1:1000 dilution.

Background

This gene is a member of the mitochondrial carrier family. The encoded protein transports ornithine across the inner mitochondrial membrane from the cytosol to the mitochondrial matrix. The protein is an essential component of the urea cycle, and functions in ammonium detoxification and biosynthesis of the amino acid arginine. Mutations in this gene result in hyperornithinemia-hyperammonemia-homocitrullinuria (HHH) syndrome. There is a pseudogene of this locus on the Y chromosome.

Note: This product is for in vitro research use only