

EMG1 Polyclonal Antibody

Catalog No: #30563



Package Size: #30563-1 50ul #30563-2 100ul

Orders: order@signalwayantibody.com
Support: tech@signalwayantibody.com

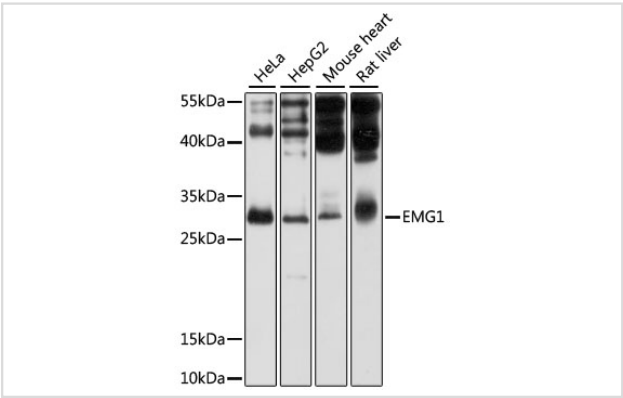
Description

Product Name	EMG1 Polyclonal Antibody
Host Species	Rabbit
Clonality	Polyclonal
Isotype	IgG
Purification	Affinity purification
Applications	WB
Species Reactivity	Human,Mouse,Rat
Immunogen Description	Recombinant fusion protein of human EMG1 (NP_006322.4).
Other Names	EMG1; C2F; Grcc2f; NEP1; EMG1, N1-specific pseudouridine methyltransferase
Accession No.	Swiss-Prot#:Q92979NCBI Gene ID:10436
Uniprot	Q92979
GeneID	10436;
Calculated MW	27kDa
Formulation	Avoid freeze / thaw cycles. Buffer: PBS with 50% glycerol, pH7.4.
Storage	Store at -20°C

Application Details

WB 1:500 - 1:2000

Images



Western blot analysis of extracts of various cell lines, using EMG1 at 1:1000 dilution.

Background

This gene encodes an essential, conserved eukaryotic protein that methylates pseudouridine in 18S rRNA. The related protein in yeast is a component of the small subunit processome and is essential for biogenesis of the ribosomal 40S subunit. A mutation in this gene has been associated with Bowen-Conradi syndrome. Alternative splicing results in multiple transcript variants.

Note: This product is for in vitro research use only