

# TOMM34 Polyclonal Antibody

Catalog No: #30569



Package Size: #30569-1 50ul #30569-2 100ul

Orders: [order@signalwayantibody.com](mailto:order@signalwayantibody.com)  
Support: [tech@signalwayantibody.com](mailto:tech@signalwayantibody.com)

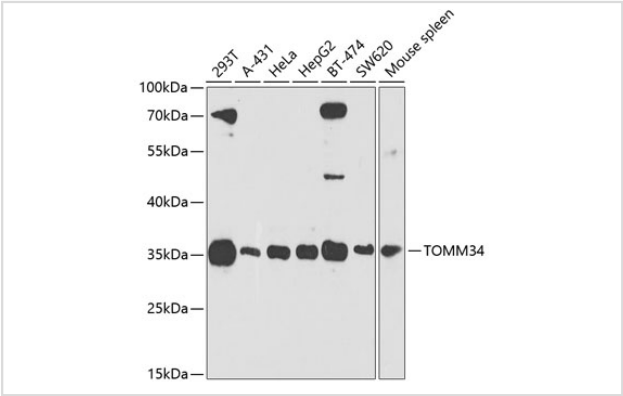
## Description

Product Name	TOMM34 Polyclonal Antibody
Host Species	Rabbit
Clonality	Polyclonal
Isotype	IgG
Purification	Affinity purification
Applications	WB
Species Reactivity	Human,Mouse
Immunogen Description	Recombinant fusion protein of human TOMM34 (NP_006800.2).
Other Names	TOMM34;HTOM34P;TOM34;URCC3
Accession No.	Uniprot:Q15785GeneID:10953
Uniprot	Q15785
GeneID	10953
Calculated MW	35kDa
SDS-PAGE MW	35kDa
Formulation	PBS with 0.02% sodium azide,50% glycerol,pH7.3.
Storage	Store at -20°C. Avoid freeze / thaw cycles.

## Application Details

WB 1:500 - 1:2000

## Images



Western blot analysis of extracts of various cell lines, using TOMM34 antibody.

## Background

The protein encoded by this gene is involved in the import of precursor proteins into mitochondria. The encoded protein has a chaperone-like activity, binding the mature portion of unfolded proteins and aiding their import into mitochondria. This protein, which is found in the cytoplasm and sometimes associated with the outer mitochondrial membrane, has a weak ATPase activity and contains 6 TPR repeats.

---

Note: This product is for in vitro research use only