

KRR1 Polyclonal Antibody

Catalog No: #30573

Package Size: #30573-1 50ul #30573-2 100ul

Orders: order@signalwayantibody.com

Support: tech@signalwayantibody.com

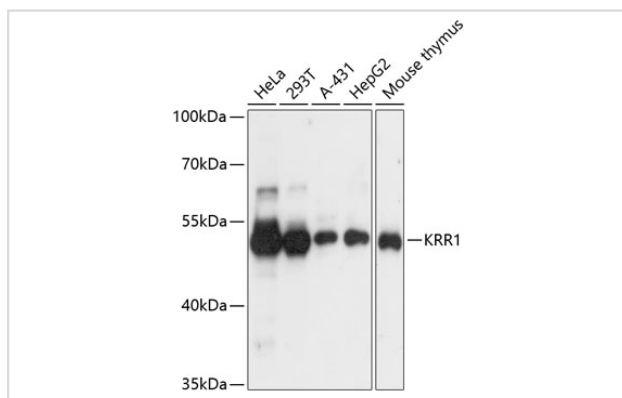
Description

Product Name	KRR1 Polyclonal Antibody
Host Species	Rabbit
Clonality	Polyclonal
Isotype	IgG
Purification	Affinity purification
Applications	WB,IF
Species Reactivity	Human,Mouse,Rat
Immunogen Description	Recombinant fusion protein of human KRR1 (NP_008974.5).
Other Names	KRR1; HRB2; RIP-1; KRR1 small subunit processome component homolog
Accession No.	Swiss-Prot#:Q13601NCBI Gene ID:11103
Uniprot	Q13601
GeneID	11103;
Calculated MW	44kDa
Formulation	Avoid freeze / thaw cycles. Buffer: PBS with 50% glycerol, pH7.4.
Storage	Store at -20°C

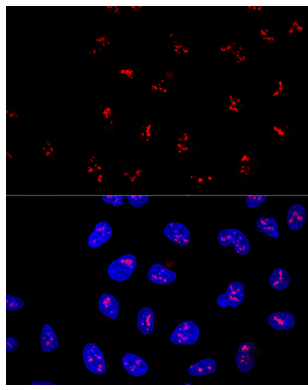
Application Details

WB □ 1:500 - 1:2000 IF □ 1:50 - 1:200

Images



Western blot analysis of extracts of various cell lines, using KRR1 at 1:3000 dilution.



Confocal immunofluorescence analysis of U2OS cells using KRR1 Polyclonal at dilution of 1:100. Blue: DAPI for nuclear staining.

Background

Note: This product is for in vitro research use only