

# CRBN Polyclonal Antibody

Catalog No: #30601



Package Size: #30601-1 50ul #30601-2 100ul

Orders: [order@signalwayantibody.com](mailto:order@signalwayantibody.com)  
Support: [tech@signalwayantibody.com](mailto:tech@signalwayantibody.com)

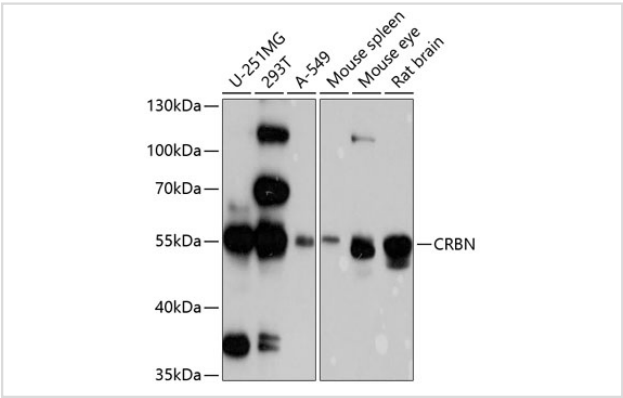
## Description

Product Name	CRBN Polyclonal Antibody
Host Species	Rabbit
Clonality	Polyclonal
Isotype	IgG
Purification	Affinity purification
Applications	WB
Species Reactivity	Human,Mouse,Rat
Immunogen Description	Recombinant fusion protein of human CRBN (NP_001166953.1).
Other Names	CRBN; MRT2; MRT2A; cereblon
Accession No.	Swiss-Prot#:Q96SW2NCBI Gene ID:51185
Uniprot	Q96SW2
GeneID	51185;
Calculated MW	55kDa
Formulation	Avoid freeze / thaw cycles. Buffer: PBS with 50% glycerol, pH7.4.
Storage	Store at -20°C

## Application Details

WB 1:200 - 1:2000

## Images



Western blot analysis of extracts of various cell lines, using CRBN at 1:1000 dilution.

## Background

This gene encodes a protein related to the Lon protease protein family. In rodents and other mammals this gene product is found in the cytoplasm localized with a calcium channel membrane protein, and is thought to play a role in brain development. Mutations in this gene are associated with autosomal recessive nonsyndromic mental retardation. Multiple transcript variants encoding different isoforms have been found for this gene.

---

Note: This product is for in vitro research use only