

DYNC2LI1 Polyclonal Antibody

Catalog No: #30605



Package Size: #30605-1 50ul #30605-2 100ul

Orders: order@signalwayantibody.com
Support: tech@signalwayantibody.com

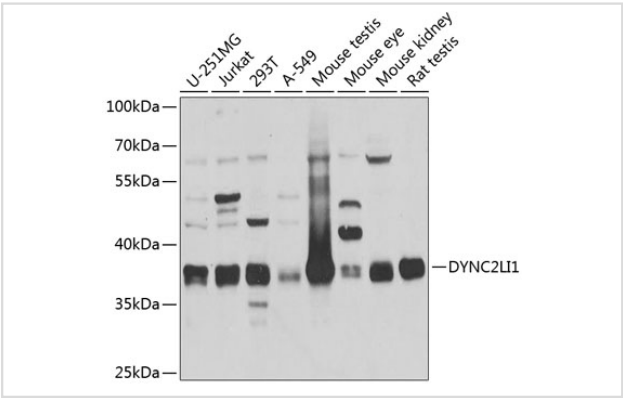
Description

Product Name	DYNC2LI1 Polyclonal Antibody
Host Species	Rabbit
Clonality	Polyclonal
Isotype	IgG
Purification	Affinity purification
Applications	WB
Species Reactivity	Human,Mouse,Rat
Immunogen Description	Recombinant fusion protein of human DYNC2LI1 (NP_001180393.1).
Other Names	DYNC2LI1; CGI-60; D2LIC; LIC3; cytoplasmic dynein 2 light intermediate chain 1
Accession No.	Swiss-Prot#:Q8TCX1NCBI Gene ID:51626
Uniprot	Q8TCX1
GeneID	51626;
Calculated MW	38kDa
Formulation	Avoid freeze / thaw cycles. Buffer: PBS with 50% glycerol, pH7.4.
Storage	Store at -20°C

Application Details

WB 1:500 - 1:2000

Images



Western blot analysis of extracts of various cell lines, using DYNC2LI1 at 1:1000 dilution.

Background

This gene encodes a protein that is a component of the dynein-2 microtubule motor protein complex that plays a role in the retrograde transport of cargo in primary cilia via the intraflagellar transport system. This gene is ubiquitously expressed and its protein, which localizes to the axoneme and Golgi apparatus, interacts directly with the cytoplasmic dynein 2 heavy chain 1 protein to form part of the multi-protein dynein-2 complex. Mutations in this gene produce defects in the dynein-2 complex which result in several types of ciliopathy including short-rib thoracic dysplasia 15 with polydactyly

(SRTD15). Alternative splicing results in multiple transcript variants encoding distinct isoforms.

Note: This product is for in vitro research use only