

beta Tubulin antibody

Catalog No: #23176

Orders: order@signalwayantibody.com

Support: tech@signalwayantibody.com

Description

Product Name	beta Tubulin antibody
Host Species	Rabbit
Clonality	Polyclonal
Purification	Purified by antigen-affinity chromatography.
Applications	WB IF
Species Reactivity	Hu
Immunogen Type	Recombinant Protein
Immunogen Description	Recombinant protein fragment contain a sequence corresponding to a region within amino acids 238 and 439 of Human TUBB
Target Name	beta Tubulin
Accession No.	NCBI Gene ID: 203068NCBI mRNA#: NM_178014NCBI Protein#: NP_821133
Uniprot	P07437
GeneID	203068;
Concentration	1.35 mg/ml
Formulation	Supplied in 0.1M Tris-buffered saline with 20% Glycerol (pH7.0). 0.01% Thimerosal was added as a preservative.
Storage	Store at -20°C for long term preservation (recommended). Store at 4°C for short term use.

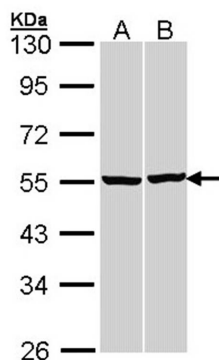
Application Details

Predicted MW: 50kd

Western blotting: 1:500-1:3000

Immunofluorescence: 1:100-1:200

Images



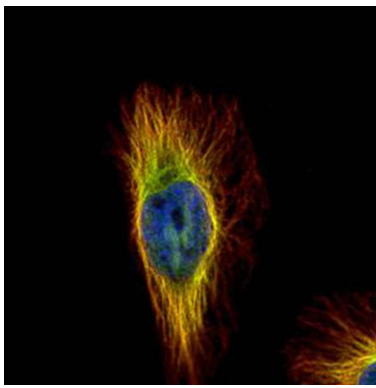
Sample (30 ug of whole cell lysate)

A: 293T

B: H1299

10% SDS PAGE

Primary antibody diluted at 1: 3000



Confocal immunofluorescence analysis (Olympus FV10i) of paraformaldehyde-fixed HeLa, using beta Tubulin antibody (Green) at 1: 500 dilution and alpha-tubulin antibody (Red) at 1: 2000.

Background

Tubulin is the major constituent of microtubules. It binds two moles of GTP, one at an exchangeable site on the beta chain and one at a non-exchangeable site on the alpha-chain. Belongs to the tubulin family. Dimer of alpha and beta chains.

Note: This product is for in vitro research use only