

SIRPG Polyclonal Antibody

Catalog No: #30615



Package Size: #30615-1 50ul #30615-2 100ul

Orders: order@signalwayantibody.com
Support: tech@signalwayantibody.com

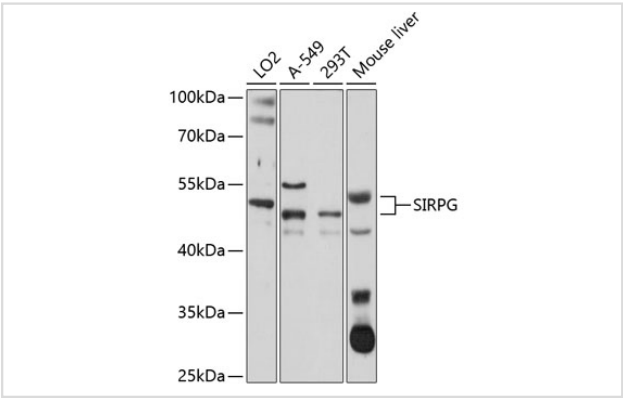
Description

Product Name	SIRPG Polyclonal Antibody
Host Species	Rabbit
Clonality	Polyclonal
Isotype	IgG
Purification	Affinity purification
Applications	WB
Species Reactivity	Human,Mouse
Immunogen Description	Recombinant fusion protein of human SIRPG (NP_543006.2).
Other Names	SIRPG; CD172g; SIRP-B2; SIRPB2; SIRPgamma; bA77C3.1; signal-regulatory protein gamma
Accession No.	Swiss-Prot#:Q9P1W8NCBI Gene ID:55423
Uniprot	Q9P1W8
GeneID	55423;
Calculated MW	45-50kDa
Formulation	Avoid freeze / thaw cycles. Buffer: PBS with 50% glycerol, pH7.4.
Storage	Store at -20°C

Application Details

WB 1:200 - 1:2000

Images



Western blot analysis of extracts of various cell lines, using SIRPG at 1:1000 dilution.

Background

The protein encoded by this gene is a member of the signal-regulatory protein (SIRP) family, and also belongs to the immunoglobulin superfamily. SIRP family members are receptor-type transmembrane glycoproteins known to be involved in the negative regulation of receptor tyrosine kinase-coupled signaling processes. Alternatively spliced transcript variants encoding different isoforms have been described.

Note: This product is for in vitro research use only