

CYP2J2 Polyclonal Antibody

Catalog No: #30665

Package Size: #30665-1 50ul #30665-2 100ul

Orders: order@signalwayantibody.comSupport: tech@signalwayantibody.com

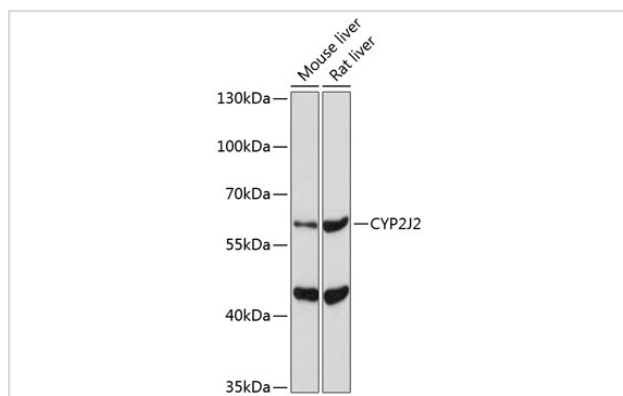
Description

Product Name	CYP2J2 Polyclonal Antibody
Host Species	Rabbit
Clonality	Polyclonal
Isotype	IgG
Purification	Affinity purification
Applications	WB
Species Reactivity	Human,Mouse,Rat
Immunogen Description	A synthetic peptide of human CYP2J2 (NP_000766.2).
Other Names	CYP2J2;CPJ2;CYPIIJ2
Accession No.	Uniprot:P51589GenelD:1573
Uniprot	P51589
GenelD	1573
Calculated MW	57kDa
SDS-PAGE MW	57kDa
Formulation	PBS with 0.02% sodium azide,50% glycerol,pH7.3.
Storage	Store at -20°C. Avoid freeze / thaw cycles.

Application Details

WB □ 1:500 - 1:2000

Images



Western blot analysis of extracts of various cell lines, using CYP2J2 Antibody.

Background

This gene encodes a member of the cytochrome P450 superfamily of enzymes. The cytochrome P450 proteins are monooxygenases which catalyze many reactions involved in drug metabolism and synthesis of cholesterol, steroids and other lipids. This protein localizes to the endoplasmic reticulum and is thought to be the predominant enzyme responsible for epoxidation of endogenous arachidonic acid in cardiac tissue. Multiple transcript variants

have been found for this gene.

Note: This product is for in vitro research use only