

KRIT1 Polyclonal Antibody

Catalog No: #30743



Package Size: #30743-1 50ul #30743-2 100ul

Orders: order@signalwayantibody.com
Support: tech@signalwayantibody.com

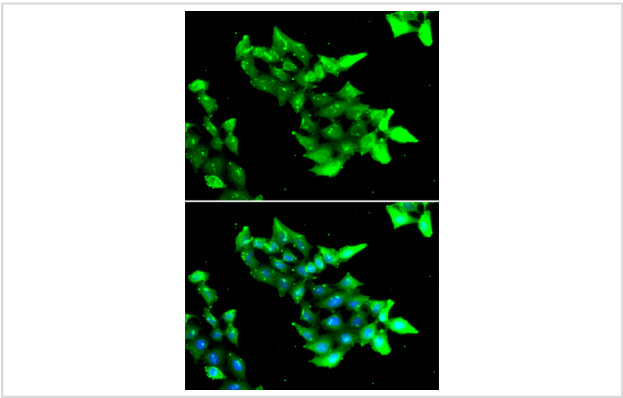
Description

Product Name	KRIT1 Polyclonal Antibody
Host Species	Rabbit
Clonality	Polyclonal
Isotype	IgG
Purification	Affinity purification
Applications	WB,IF
Species Reactivity	Human,Mouse,Rat
Immunogen Description	Recombinant fusion protein of human KRIT1 (NP_919438.1).
Other Names	KRIT1; CAM; CCM1; KRIT1, ankyrin repeat containing
Accession No.	Swiss-Prot#:O00522NCBI Gene ID:889
Uniprot	O00522
GeneID	889;
Calculated MW	Refer to figures
Formulation	Avoid freeze / thaw cycles. Buffer: PBS with 50% glycerol, pH7.4.
Storage	Store at -20°C

Application Details

WB 1:500 - 1:2000IF 1:50 - 1:100

Images



Immunofluorescence analysis of HeLa cells using KRIT1 .
Blue: DAPI for nuclear staining.

Background

This gene encodes a protein containing four ankyrin repeats, a band 4.1/ezrin/radixin/moesin (FERM) domain, and multiple NPXY sequences. The encoded protein is localized in the nucleus and cytoplasm. It binds to integrin cytoplasmic domain-associated protein-1 alpha (ICAP1alpha), and plays a critical role in beta1-integrin-mediated cell proliferation. It associates with junction proteins and RAS-related protein 1A (Rap1A), which requires the encoded protein for maintaining the integrity of endothelial junctions. It is also a microtubule-associated protein and may play a role in microtubule

targeting. Mutations in this gene result in cerebral cavernous malformations. Multiple alternatively spliced transcript variants have been found for this gene.

Note: This product is for in vitro research use only