

TROVE2 Polyclonal Antibody

Catalog No: #30783



Package Size: #30783-1 50ul #30783-2 100ul

Orders: [order@signalwayantibody.com](mailto:order@signalwayantibody.com)  
Support: [tech@signalwayantibody.com](mailto:tech@signalwayantibody.com)

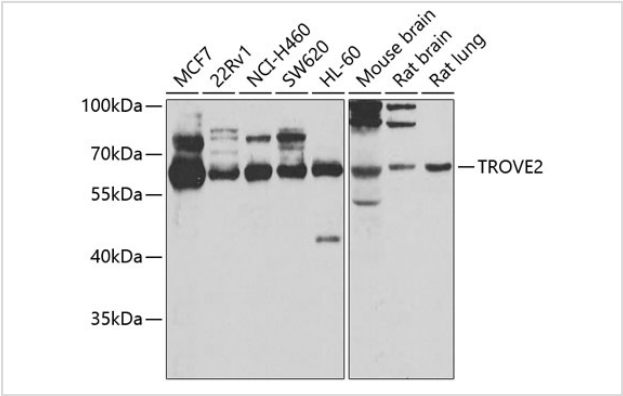
Description

Product Name	TROVE2 Polyclonal Antibody
Host Species	Rabbit
Clonality	Polyclonal
Isotype	IgG
Purification	Affinity purification
Applications	WB
Species Reactivity	Human,Mouse,Rat
Immunogen Description	Recombinant fusion protein of human TROVE2 (NP_004591.2).
Other Names	TROVE2;RO60;RORNP;SSA2
Accession No.	Uniprot:P10155GenelD:6738
Uniprot	P10155
GenelD	6738
Calculated MW	61kDa
SDS-PAGE MW	61kDa
Formulation	PBS with 0.02% sodium azide,50% glycerol,pH7.3.
Storage	Store at -20°C. Avoid freeze / thaw cycles.

Application Details

WB 1:500 - 1:2000

Images



Western blot analysis of extracts of various cell lines, using TROVE2 antibody.

Background

RNA-binding protein that binds to misfolded non-coding RNAs, pre-5S rRNA, and several small cytoplasmic RNA molecules known as Y RNAs. May stabilize some of these RNAs and protect them from degradation. Binds to endogenous Alu retroelements which are induced by type I interferon and stimulate porinflammatroty cytokine secretion. Regulates the expression of Alu retroelements as well as inflammatory genes.

---

Note: This product is for in vitro research use only