

CBFA2T2 Polyclonal Antibody

Catalog No: #30796



Package Size: #30796-1 50ul #30796-2 100ul

Orders: order@signalwayantibody.com
Support: tech@signalwayantibody.com

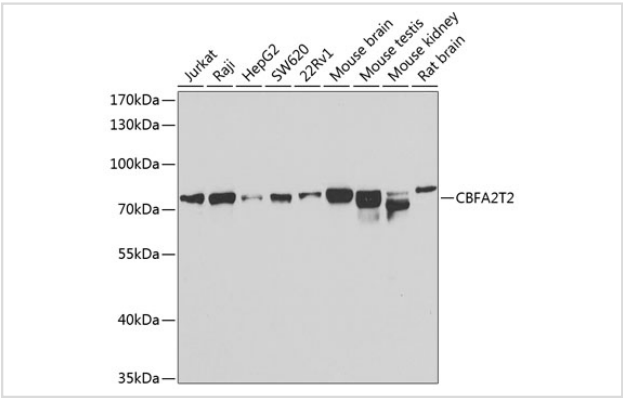
Description

Product Name	CBFA2T2 Polyclonal Antibody
Host Species	Rabbit
Clonality	Polyclonal
Isotype	IgG
Purification	Affinity purification
Applications	WB,IF
Species Reactivity	Human,Mouse,Rat
Immunogen Description	Recombinant fusion protein of human CBFA2T2 (NP_005084.1).
Other Names	CBFA2T2; EHT; MTGR1; ZMYND3; p85; protein CBFA2T2
Accession No.	Swiss-Prot#:O43439NCBI Gene ID:9139
Uniprot	O43439
GeneID	9139;
Calculated MW	72kDa
Formulation	Avoid freeze / thaw cycles. Buffer: PBS with 50% glycerol, pH7.4.
Storage	Store at -20°C

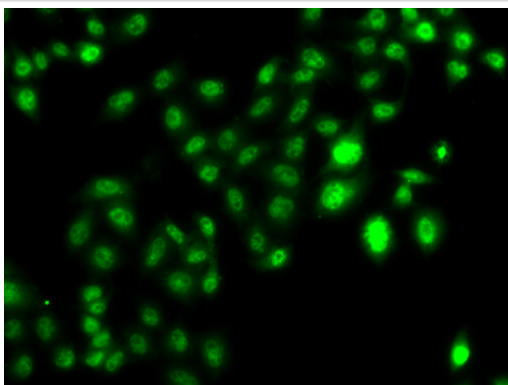
Application Details

WB 1:500 - 1:2000IF 1:50 - 1:100

Images



Western blot analysis of extracts of various cell lines, using CBFA2T2 at 1:1000 dilution.



Immunofluorescence analysis of U2OS cells using CBFA2T2 .

Background

In acute myeloid leukemia, especially in the M2 subtype, the t(8;21)(q22;q22) translocation is one of the most frequent karyotypic abnormalities. The translocation produces a chimeric gene made up of the 5'-region of the RUNX1 (AML1) gene fused to the 3'-region of the CBFA2T1 (MTG8) gene. The chimeric protein is thought to associate with the nuclear corepressor/histone deacetylase complex to block hematopoietic differentiation. The protein encoded by this gene binds to the AML1-MTG8 complex and may be important in promoting leukemogenesis. Several transcript variants are thought to exist for this gene, but the full-length natures of only three have been described.

Note: This product is for in vitro research use only