

# S100A7A Antibody

Catalog No: #46157



Package Size: #46157-1 50ul #46157-2 100ul

Orders: [order@signalwayantibody.com](mailto:order@signalwayantibody.com)  
Support: [tech@signalwayantibody.com](mailto:tech@signalwayantibody.com)

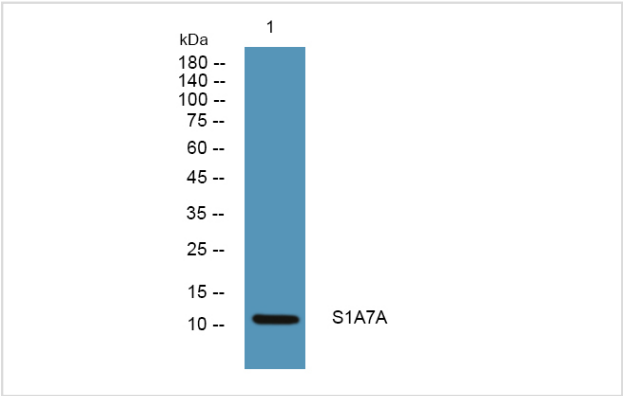
## Description

Product Name	S100A7A Antibody
Host Species	Rabbit
Clonality	Polyclonal
Purification	Immunogen affinity purified
Applications	WB
Species Reactivity	Hu
Specificity	S100A7A Antibody detects endogenous levels of total S100A7A
Immunogen Type	Peptide
Immunogen Description	A synthesized peptide derived from human S100A7A
Target Name	S100A7A
Other Names	S100A7A, NICE-2, S100A15, S100A7f, Protein S100-A7A, S100A7L1
Accession No.	Swiss-Prot#: Q86SG5NCBI Gene ID:338324
Uniprot	Q86SG5
GeneID	338324;
Calculated MW	11 kDa
Concentration	1.0mg/mL
Formulation	Liquid in PBS containing 50% glycerol, and 0.02% sodium azide.
Storage	Store at -20°C

## Application Details

Western blotting: 1:1000-3000

## Images



Western blot analysis of lysates from DU145 cells, primary antibody was diluted at 1:1000, 4o½ over night

---

Note: This product is for in vitro research use only