

RSRC1 Polyclonal Antibody

Catalog No: #30858

Package Size: #30858-1 50ul #30858-2 100ul

Orders: order@signalwayantibody.comSupport: tech@signalwayantibody.com

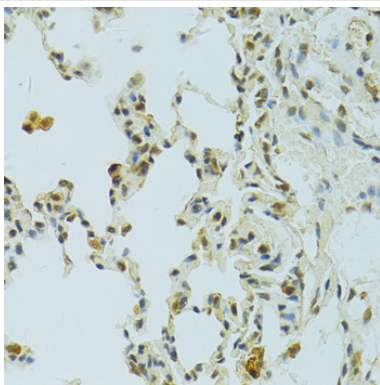
Description

Product Name	RSRC1 Polyclonal Antibody
Host Species	Rabbit
Clonality	Polyclonal
Isotype	IgG
Purification	Affinity purification
Applications	WB,IHC,IF
Species Reactivity	Human,Mouse,Rat
Immunogen Description	Recombinant fusion protein of human RSRC1 (NP_001258763.1).
Other Names	RSRC1; BM-011; SFRS21; SRrp53; serine/Arginine-related protein 53
Accession No.	Swiss-Prot#:Q96IZ7NCBI Gene ID:51319
Uniprot	Q96IZ7
GeneID	51319;
Calculated MW	38kDa
Formulation	Avoid freeze / thaw cycles. Buffer: PBS with 50% glycerol, pH7.4.
Storage	Store at -20°C

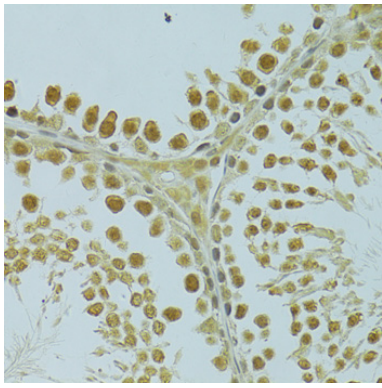
Application Details

WB□1:500 - 1:2000IHC□1:50 - 1:100IF□1:50 - 1:100

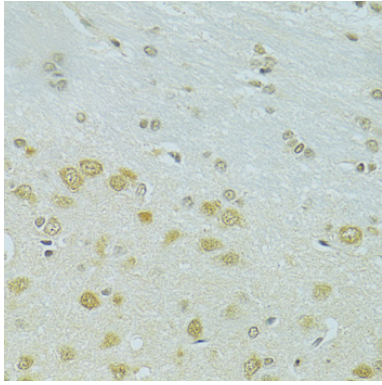
Images



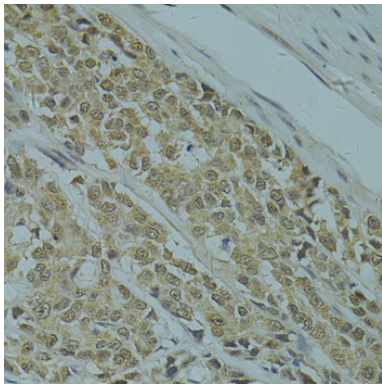
Immunohistochemistry of paraffin-embedded rat lung using RSRC1 at dilution of 1:100 (40x lens).



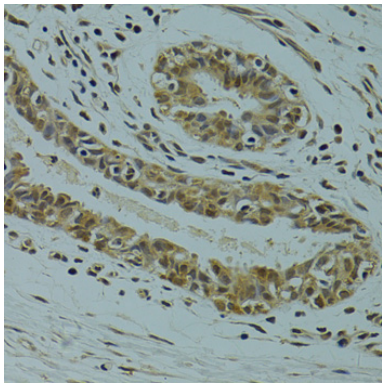
Immunohistochemistry of paraffin-embedded rat testis using RSRC1 at dilution of 1:100 (40x lens).



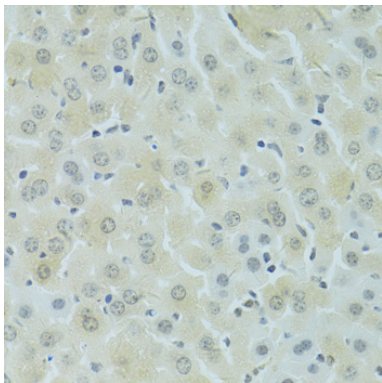
Immunohistochemistry of paraffin-embedded rat brain using RSRC1 at dilution of 1:100 (40x lens).



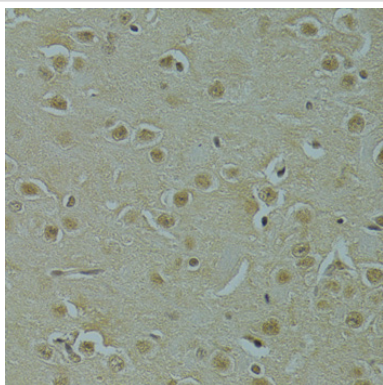
Immunohistochemistry of paraffin-embedded human colon carcinoma using RSRC1 at dilution of 1:100 (40x lens).



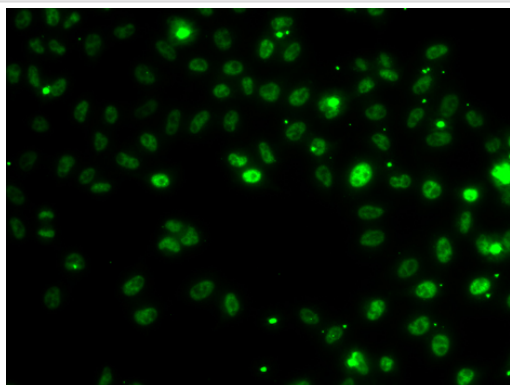
Immunohistochemistry of paraffin-embedded human breast cancer using RSRC1 at dilution of 1:100 (40x lens).



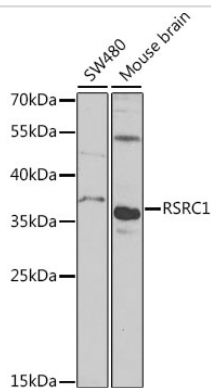
Immunohistochemistry of paraffin-embedded mouse liver using RSRC1 at dilution of 1:100 (40x lens).



Immunohistochemistry of paraffin-embedded mouse brain using RSRC1 at dilution of 1:100 (40x lens).



Immunofluorescence analysis of MCF-7 cells using RSRC1 .



Western blot analysis of extracts of various cell lines, using RSRC1 at 1:1000 dilution.

Background

This gene encodes a member of the serine and arginine rich-related protein family. The encoded protein is involved in both constitutive and alternative mRNA splicing. This gene may be associated with schizophrenia. A pseudogene of this gene is located on chromosome 9. Alternative splicing results in multiple transcript variants encoding different isoforms.

Note: This product is for in vitro research use only