

SETBP1 Polyclonal Antibody

Catalog No: #30860

Package Size: #30860-1 50ul #30860-2 100ul

Orders: order@signalwayantibody.comSupport: tech@signalwayantibody.com

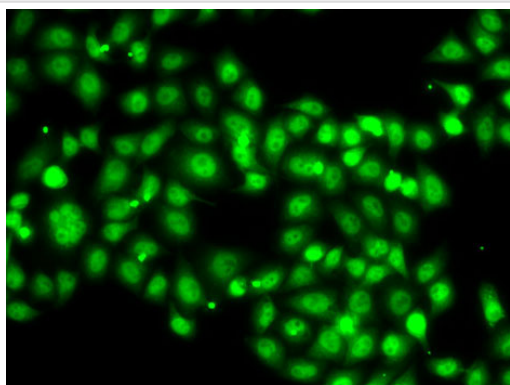
Description

Product Name	SETBP1 Polyclonal Antibody
Host Species	Rabbit
Clonality	Polyclonal
Isotype	IgG
Purification	Affinity purification
Applications	WB,IF
Species Reactivity	Human,Rat
Immunogen Description	Recombinant fusion protein of human SETBP1 (NP_001123582.1).
Other Names	SETBP1; MRD29; SEB; SET-binding protein
Accession No.	Swiss-Prot#:Q9Y6X0NCBI Gene ID:26040
Uniprot	Q9Y6X0
GeneID	26040;
Calculated MW	175kDa
Formulation	Avoid freeze / thaw cycles. Buffer: PBS with 50% glycerol, pH7.4.
Storage	Store at -20°C

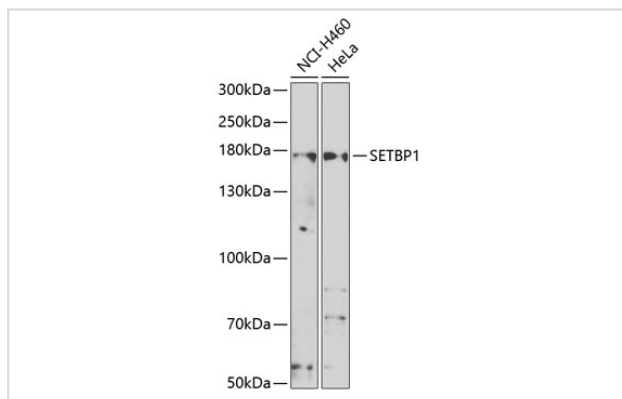
Application Details

WB□1:500 - 1:2000IF□1:50 - 1:100

Images



Immunofluorescence analysis of A-549 cells using SETBP1 .



Western blot analysis of extracts of various cell lines, using SETBP1 at 1:1000 dilution.

Background

This gene encodes a protein which contains a several motifs including a ski homology region and a SET-binding region in addition to three nuclear localization signals. The encoded protein has been shown to bind the SET nuclear oncogene which is involved in DNA replication. Mutations in this gene are associated with Schinzel-Giedion midface retraction syndrome. Multiple transcript variants encoding different isoforms have been found for this gene.

Note: This product is for in vitro research use only