

## GCM1 Polyclonal Antibody

Catalog No: #30878

Package Size: #30878-1 50ul #30878-2 100ul

Orders: [order@signalwayantibody.com](mailto:order@signalwayantibody.com)Support: [tech@signalwayantibody.com](mailto:tech@signalwayantibody.com)

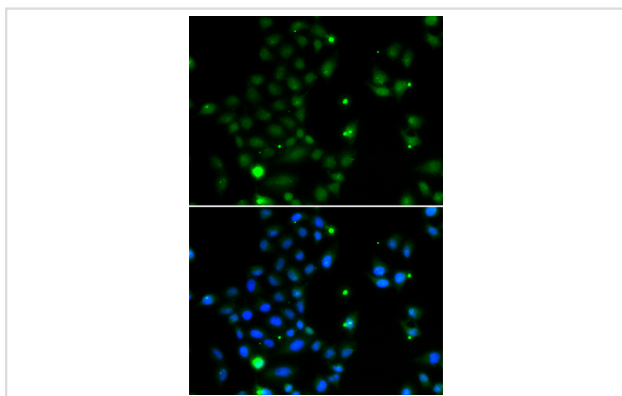
## Description

Product Name	GCM1 Polyclonal Antibody
Host Species	Rabbit
Clonality	Polyclonal
Isotype	IgG
Purification	Affinity purification
Applications	WB,IF
Species Reactivity	Human
Immunogen Description	Recombinant fusion protein of human GCM1 (NP_003634.2).
Other Names	GCM1; GCMA; hGCMA; glial cells missing homolog 1
Accession No.	Swiss-Prot#:Q9NP62NCBI Gene ID:8521
Uniprot	Q9NP62
GeneID	8521;
Calculated MW	Refer to figures
Formulation	Avoid freeze / thaw cycles. Buffer: PBS with 50% glycerol, pH7.4.
Storage	Store at -20°C

## Application Details

WB□1:500 - 1:2000IF□1:50 - 1:100

## Images



Immunofluorescence analysis of MCF-7 cells using GCM1 .  
Blue: DAPI for nuclear staining.

## Background

This gene encodes a DNA-binding protein with a gcm-motif (glial cell missing motif). The encoded protein is a homolog of the Drosophila glial cells missing gene (gcm). This protein binds to the GCM-motif (A/G)CCCGCAT, a novel sequence among known targets of DNA-binding proteins. The N-terminal DNA-binding domain confers the unique DNA-binding activity of this protein.

---

Note: This product is for in vitro research use only