

Beclin 1 Polyclonal Antibody

Catalog No: #30900



Package Size: #30900-1 50ul #30900-2 100ul

Orders: order@signalwayantibody.com
Support: tech@signalwayantibody.com

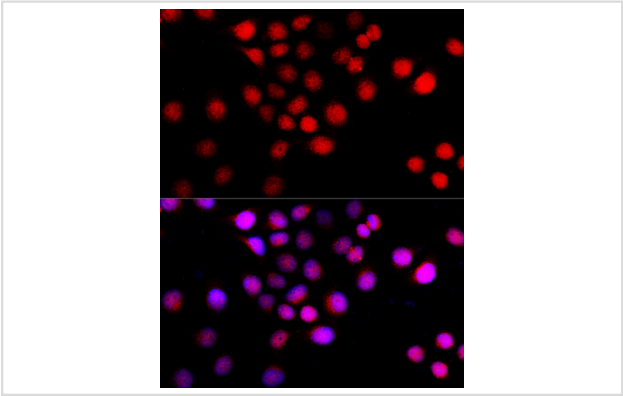
Description

Product Name	Beclin 1 Polyclonal Antibody
Host Species	Rabbit
Clonality	Polyclonal
Isotype	IgG
Purification	Affinity purification
Applications	WB,IHC,IF
Species Reactivity	Human,Mouse,Rat
Immunogen Description	Recombinant fusion protein of human Beclin 1 (NP_003757.1).
Other Names	BECN1; ATG6; VPS30; beclin1; beclin-1
Accession No.	Swiss-Prot#:Q14457NCBI Gene ID:8678
Uniprot	Q14457
GeneID	8678;
Calculated MW	60kDa
Formulation	Avoid freeze / thaw cycles. Buffer: PBS with 50% glycerol, pH7.4.
Storage	Store at -20°C

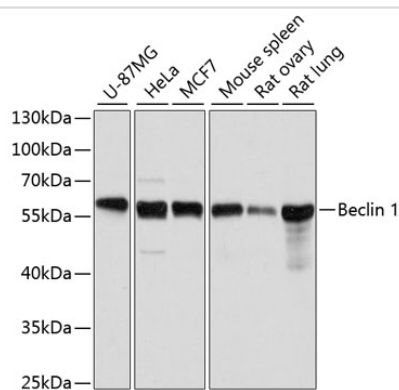
Application Details

WB 1:500 - 1:2000IHC 1:50 - 1:200IF 1:50 - 1:200IP 1:50 - 1:100

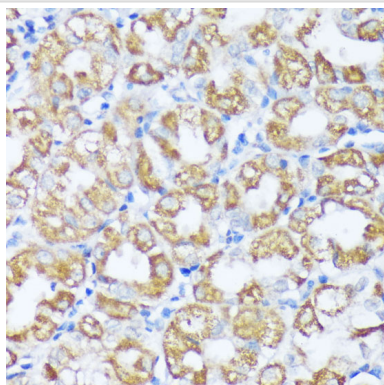
Images



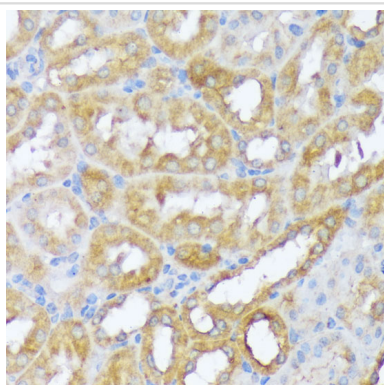
Immunofluorescence analysis of HeLa cells using Beclin 1 at dilution of 1:100 (40x lens). Blue: DAPI for nuclear staining.



Western blot analysis of extracts of various cell lines, using Beclin 1 at 1:1000 dilution.



Immunohistochemistry of paraffin-embedded human stomach using Beclin 1 at dilution of 1:100 (40x lens).



Immunohistochemistry of paraffin-embedded mouse kidney using Beclin 1 at dilution of 1:100 (40x lens).

Background

This gene encodes a protein that regulates autophagy, a catabolic process of degradation induced by starvation. The encoded protein is a component of the phosphatidylinositol-3-kinase (PI3K) complex which mediates vesicle-trafficking processes. This protein is thought to play a role in multiple cellular processes, including tumorigenesis, neurodegeneration and apoptosis. Alternative splicing results in multiple transcript variants.

Note: This product is for in vitro research use only