

## GEM Polyclonal Antibody

Catalog No: #30925

Package Size: #30925-1 50ul #30925-2 100ul

Orders: [order@signalwayantibody.com](mailto:order@signalwayantibody.com)Support: [tech@signalwayantibody.com](mailto:tech@signalwayantibody.com)

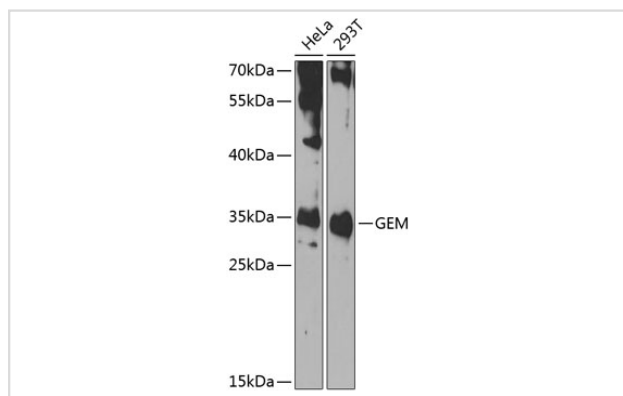
## Description

Product Name	GEM Polyclonal Antibody
Host Species	Rabbit
Clonality	Polyclonal
Isotype	IgG
Purification	Affinity purification
Applications	WB
Species Reactivity	Human,Rat
Immunogen Description	Recombinant fusion protein of human GEM (NP_005252.1).
Other Names	GEM; KIR; GTP-binding protein GEM
Accession No.	Swiss-Prot#:P55040NCBI Gene ID:2669
Uniprot	P55040
GeneID	2669;
Calculated MW	34kDa
Formulation	Avoid freeze / thaw cycles. Buffer: PBS with 50% glycerol, pH7.4.
Storage	Store at -20°C

## Application Details

WB 1:500 - 1:2000

## Images



Western blot analysis of extracts of various cell lines, using GEM at 1:1000 dilution.

## Background

The protein encoded by this gene belongs to the RAD/GEM family of GTP-binding proteins. It is associated with the inner face of the plasma membrane and could play a role as a regulatory protein in receptor-mediated signal transduction. Alternative splicing occurs at this locus and two transcript variants encoding the same protein have been identified.

---

Note: This product is for in vitro research use only